

# SQUADRO 2 × 4 lamps wallwasher

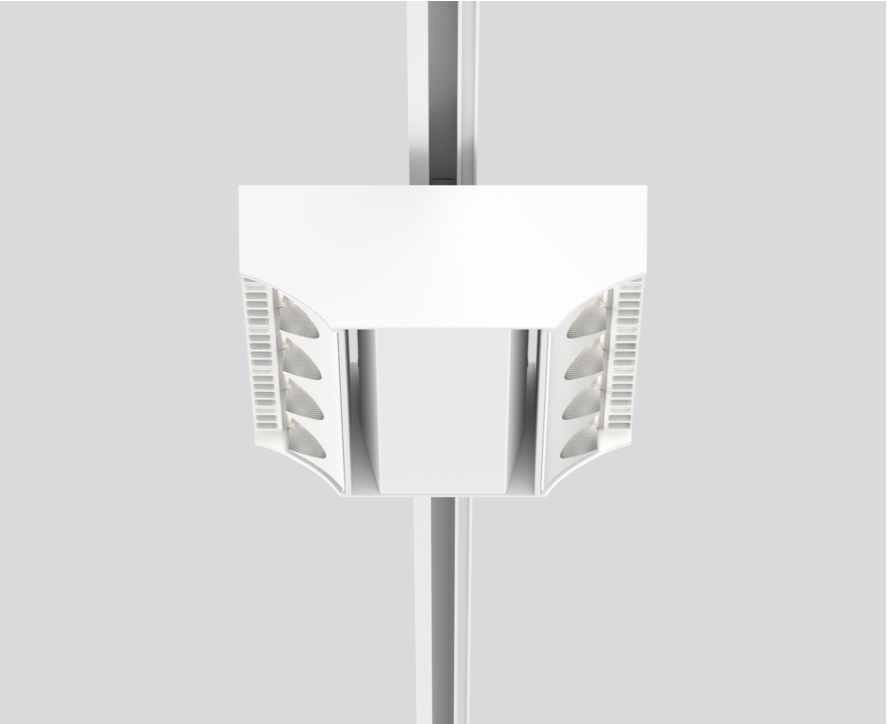
track  
149-2240617A



Project / Type

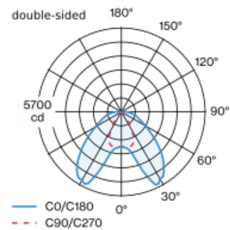
Notes

Count / Date

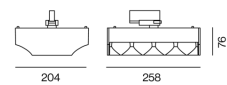


Tracked spotlight in die cast aluminium with 2x4-lamp design; converter integrated into spotlight head; heat sink integrated into luminaire geometry for optimum thermal management and passive cooling of LEDs; with COB (Chip on Board) technology for maximum efficiency; energy efficient LEDs with high CRI; aisle spotlight wall floor washer with special, multi-free-form, facet effect surface reflectors for high precision light control; precise shelf and aisle zone lighting, optimum longitudinal glare control for high viewing comfort in the aisle zone; adjustable light modules (tiltable +15° to -15°); IP 40 protection glass available as an accessory; accessories are listed separately; incl. converter, non dimmable; adapter for toolless insertion or movement on a variety of 3-phase power tracks; including attachment for linear alignment of the spotlights;

### Light distribution



### Product drawing



### General

Ceiling , Track

tilt min 15°

tilt max 15°

rotation 365°

white , RAL9016 <sup>1</sup>

IP20

11500 lm

### LED

4000 K

CRI ≥ 80

L80 / 50000 h

initial MacAdam ≤ 3 SDCM

MR 0.74

MDER 0.67

### Optical

wall floor washer

PstLM ≤ 1.0 <sup>2</sup>

SVM ≤ 0.4 <sup>2</sup>

### Electrical

non DIM

86 W

PC1 220-240V

134 lm/W

### Physical

length 258 mm

width 204 mm

height 76 mm

2.5 kg

<sup>1</sup> RAL code <sup>2</sup> Value of containing product at full load (undimmed)

### Installation instructions



### Lighting calculator



[‘149-2240617A’] The technical data represent rated values for an ambient temperature of 25°C. The data values for the luminous flux are initially subject to a tolerance of +/- 10%, those for the electrical connected load are initially subject to a tolerance of +/- 10%, and those for the colour temperature are initially subject to a tolerance of +/- 150 K. No liability is assumed for typographical or printing errors. The general terms and conditions of XAL GmbH apply.  
© XAL GmbH · Auer-Welsbach-Gasse 36 · 8055 Graz · Austria · www.xal.com