

SQUADRO 2 × 4 lamps wallwasher

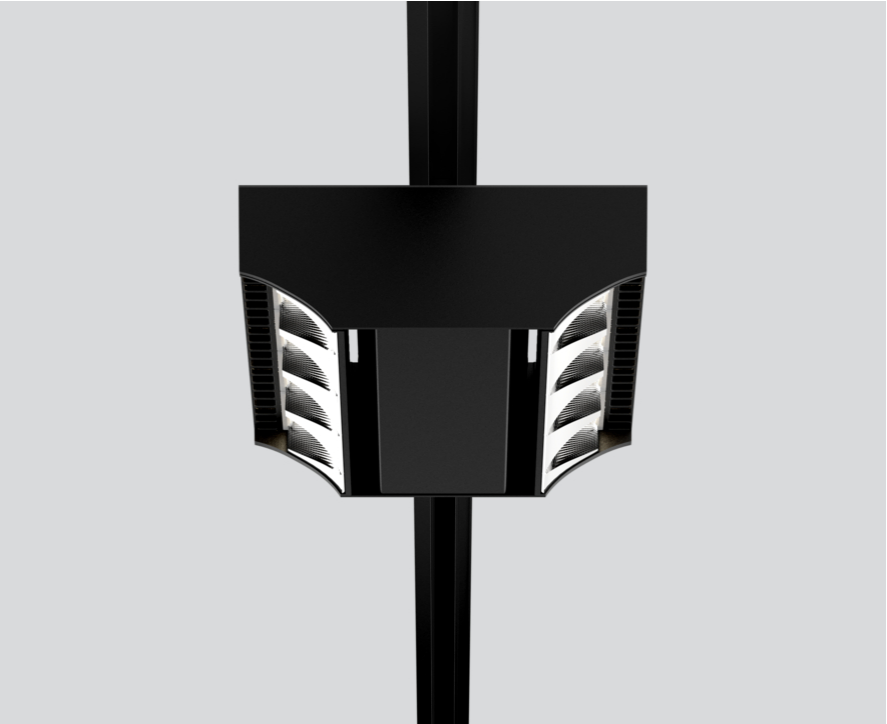
track
149-2240638S



Project / Type

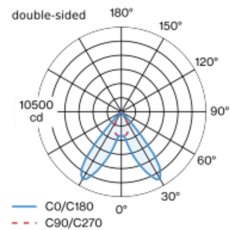
Notes

Count / Date

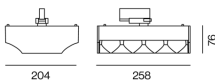


Tracked spotlight in die cast aluminium with 2x4-lamp design; converter integrated into spotlight head; heat sink integrated into luminaire geometry for optimum thermal management and passive cooling of LEDs; with COB (Chip on Board) technology for maximum efficiency; energy efficient LEDs with high CRI; aisle spotlight shelf floor washer with special, multi-free-form, facet effect surface reflectors for high precision light control; precise shelf and aisle zone lighting, optimum longitudinal glare control for high viewing comfort in the aisle zone; adjustable light modules (tiltable +15° to -15°); IP 40 protection glass available as an accessory; accessories are listed separately; incl. converter, non dimmable; adapter for toolless insertion or movement on a variety of 3-phase power tracks; including attachment for linear alignment of the spotlights;

Light distribution



Product drawing



General

Ceiling , Track

tilt min 15°

tilt max 15°

rotation 365°

black , RAL9005 ¹

IP20

11400 lm

LED

4000 K

CRI ≥ 80

L80 / 50000 h

initial MacAdam ≤ 3 SDCM

MR 0.74

MDER 0.67

Optical

shelf floor washer

PstLM ≤ 1.0 ²

SVM ≤ 0.4 ²

Electrical

DALI-2

86 W

PC1 220-240V

133 lm/W

2 DALI Addr.

Physical

length 258 mm

width 204 mm

height 76 mm

2.5 kg

¹ RAL code ² Value of containing product at full load (undimmed)

Installation instructions



Lighting calculator



SQUADRO 2 × 4 lamps wallwasher

track
149-2240638S



Project / Type

Notes

Count / Date

Circuit Breaker Types

Automatic Circuit Breaker Type	Number of Fixtures
B10	5
B13	6
B16	8
B20	10
C10	8
C13	10
C16	13
C20	17

Optical accessories

IP40 PROTECTION GLASS

ARTICLE NUMBER(S)
049-2940010

