

SQUADRO 2 × 4 lamps wallwasher

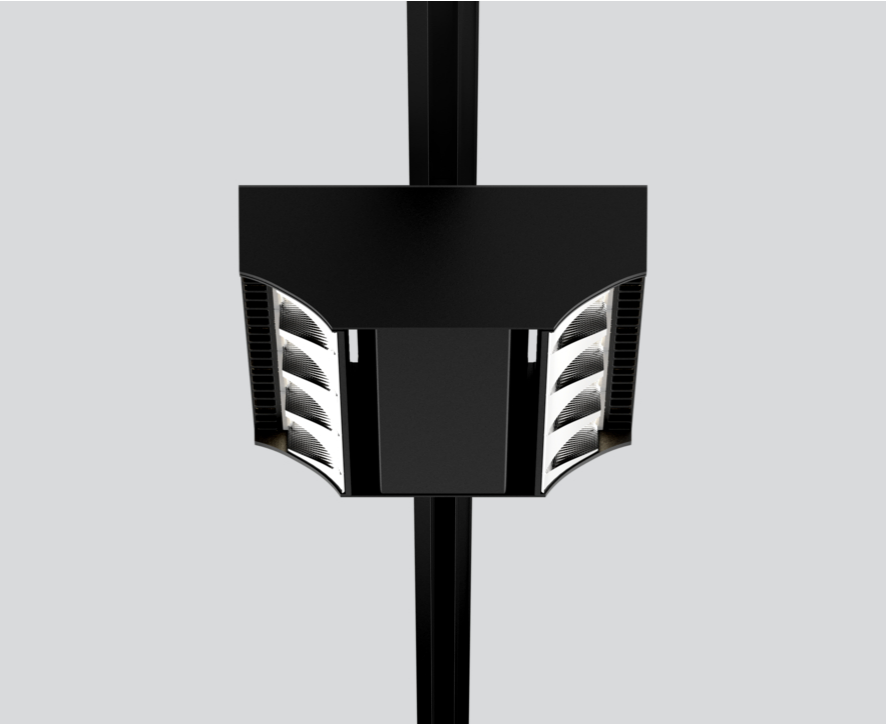
track
149-2241518B



Project / Type

Notes

Count / Date



Tracked spotlight in die cast aluminium with 2x4-lamp design; surface black powder coated; converter integrated into spotlight head; heat sink integrated into luminaire geometry for optimum thermal management and passive cooling of LEDs; with COB (Chip on Board) technology for maximum efficiency; light colour 3000 K; binning initial MacAdam ≤ 3 SDCM; CRI ≥ 80; min. 80% of luminous flux after 50000 operating hours; energy efficient LEDs with high CRI; Aisle spotlight 1x shelf / 1x wall floor washer with special, multi-free-form, facet effect surface reflectors for high precision light control; precise shelf and aisle zone lighting, optimum longitudinal glare control for high viewing comfort in the aisle zone; adjustable light modules (tiltable +15° to -15°); 365° rotatable; degree of protection IP20; IP 40 protection glass available as an accessory; accessories are listed separately; PC1; 220-240 V; incl. converter, non dimmable; adapter for toolless insertion or movement on a variety of 3-phase power tracks; including attachment for linear alignment of the spotlights; light source replaceable by an authorized professional; control gear replaceable by an authorized professional;



General

Ceiling | Track

tilt min 15°

tilt max 15°

rotation 365°

black | RAL 9005 ¹

IP20

12100 lm

LED

3000 K

CRI ≥ 80

L80 / 50000 h

initial MacAdam ≤ 3 SDCM

MR 0.58 | MDER 0.52

Optical

shelf / wall floor washer

Electrical

non DIM

PC1 | 220-240 V

system 101 W

system 120 lm/W ²

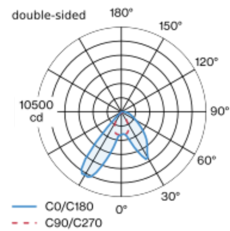
Physical

length 258 mm | width 204 mm | height 76 mm

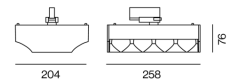
2.5 kg

¹ RAL code
² incl. consideration of optical losses, internal control unit losses & operating device efficiency

Light distribution



Product drawing



Installation instructions



Lighting calculator



SQUADRO 2 × 4 lamps wallwasher

track
149-2241518B



Project / Type

Notes

Count / Date

Circuit Breaker Types

Automatic Circuit Breaker Type	Number of Fixtures
B10	14
B13	18
B16	22
B20	28
B25	35
C10	14
C13	30
C16	22
C20	28
C25	35

Optical accessories

IP40 PROTECTION GLASS

ARTICLE NUMBER(S)
049-2940010

