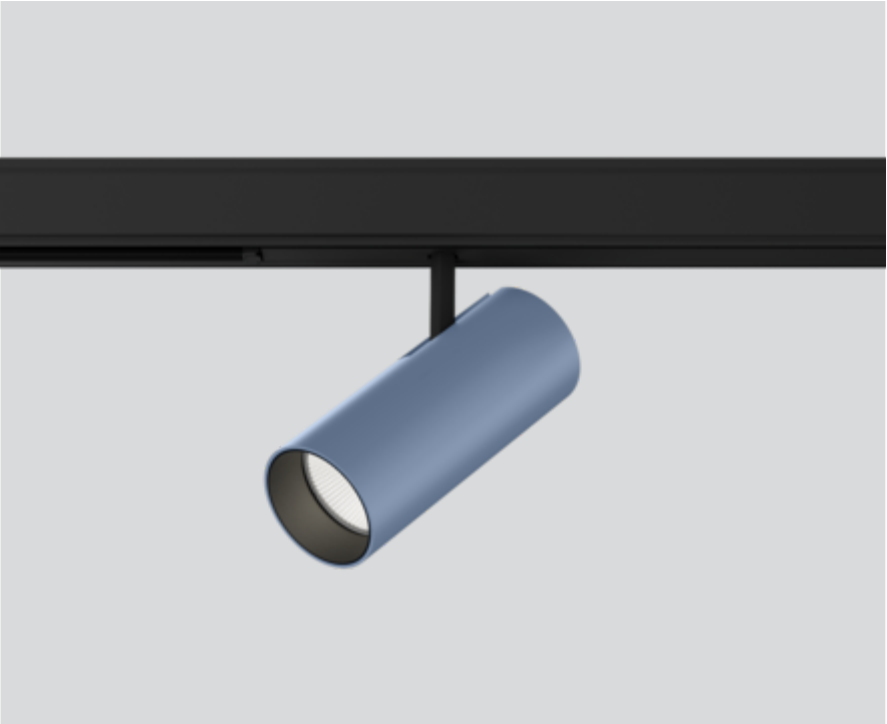




Project / Type \_\_\_\_\_

Notes \_\_\_\_\_

Count / Date \_\_\_\_\_



**General**

Ceiling , Track \_\_\_\_\_

tilt max 90° \_\_\_\_\_

rotation 360° \_\_\_\_\_

special colours \_\_\_\_\_

IP20 \_\_\_\_\_

1900 lm \_\_\_\_\_

**LED**

3000 K \_\_\_\_\_

CRI ≥ 90 \_\_\_\_\_

L80 / 50000 h \_\_\_\_\_

initial MacAdam ≤ 2 SDCM \_\_\_\_\_

R<sub>g</sub>: 100 , R<sub>f</sub>: 91 , R<sub>f(1-5)</sub>: 88 \_\_\_\_\_

MR 0.59 \_\_\_\_\_

MDER 0.53 \_\_\_\_\_

**Optical**

medium \_\_\_\_\_

beam angle 31° \_\_\_\_\_

PstLM ≤ 1.0 <sup>1</sup> \_\_\_\_\_

SVM ≤ 0.4 <sup>1</sup> \_\_\_\_\_

Cylindrical tracked spotlight in die-cast aluminium with 3PH universal adapter; classic style in elegant design for discerning requirements; surface special colours powder coated; 360° rotatable and 90° tiltable; converter integrated in the power track adapter; passive cooling of the LEDs through improved heat sink geometry; with COB (Chip on Board) technology for maximum efficiency; no appearance of multiple shadows; light colour 3000 K; binning initial MacAdam ≤ 2 SDCM; CRI ≥ 90; min. 80% of luminous flux after 50000 operating hours; energy efficient LEDs with high CRI; high quality, aluminium, vapour deposition coated reflector with faceted lens design; precise radiation characteristic with 31° beam; good glare control through recessed light point level; optical attachment available as accessory; accessories are listed separately; degree of protection IP20; PC2 220-240V; adapter for toolless insertion or movement on a variety of 3-phase power tracks; adapter flush with the power track; incl. DALI-2 converter; flicker-free visual comfort through analogue current control (minimum value 1%); light source replaceable by an authorized professional; control gear replaceable by an authorized professional;

**Electrical**

DALI-2 \_\_\_\_\_

24.7 W \_\_\_\_\_

PC2 220-240V \_\_\_\_\_

77 lm/W \_\_\_\_\_

1 DALI Addr. \_\_\_\_\_

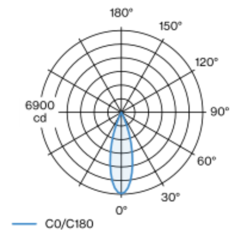
**Physical**

diameter 55 mm \_\_\_\_\_

height 140 mm \_\_\_\_\_

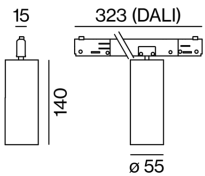
0.5 kg \_\_\_\_\_

Light distribution



medium 31°		
h (m)	EO° (lx)	ø (m)
1	6860	0.55
2	1710	1.10
3	760	1.65
4	430	2.20
5	270	2.75

Product drawing



<sup>1</sup> Value of containing product at full load (undimmed)

Installation instructions



Lighting calculator

