



SONIC

suspended

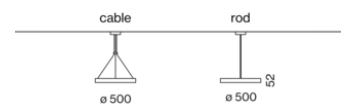
EN Conical light housing in die-cast aluminium; surface powder coated; pendant fitting with cable suspension; with integrated toolless suspension height adjustment; incl. feeder cable or with height adjustable rod suspension (chrome), feed in rod; direct / indirect light distribution; indirect light component with special PCBs for increased luminous flux and maximum ceiling illumination; completely homogeneous illumination; energy-efficient LEDs with very good colour rendering; canopy for through wiring; Acoustic elements made of high quality, self-supporting, at least 50 % recycled PET felt (high acoustic performance by doubling the material) or as an acoustically effective lampshade (large selection of colours) with sound absorbing properties available

DE Konischer Leuchtenkörper aus Aluminiumdruckguss; Oberfläche pulverbeschichtet; abgependelt mit Seilabhängung; werkzeuglose Höhenverstellung an der Leuchte; inkl. Einspeiseleitung oder mit kürzbarer Pendelrohrabhängung (chrom), Einspeiseleitung in Pendelrohr; direkt / indirekte Abstrahlcharakteristik; Indirektlichtanteil mit eigenen Platinen für erhöhten Lichtstrom und maximale Deckenaufhellung; absolut homogene Ausleuchtung; energieeffiziente LEDs mit sehr guter Farbwiedergabe; Baldachin für Weiterverdrahtung; Akustik Elemente aus hochwertigem, selbsttragendem, mind. 50 % recyceltem PET-Filz (hohe akustische Performance durch Materialaufdopplung) oder als akustisch wirksamer Leuchterschirm (große Farbauswahl) mit schallabsorbierenden Eigenschaften erhältlich

Quickinfo

3000 K, 4000 K
CRI \geq 80 / 3 SDCM
UGR \leq 19
up to ↓ 5,290 lm / ↑ 5,230 lm
up to 152 lm/W
L90 / 50000 h
DALI-2, stand alone ESSENTIAL sensor
Microprismatic
IP20

Types



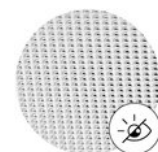
Colour



Light distributions



DiiA® standards
251, 252, 253



microprismatic
UGR \leq 19



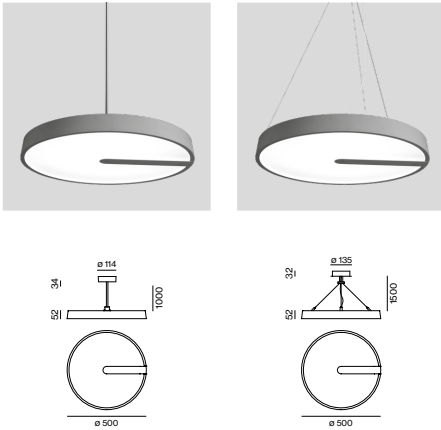
sensor version
available



acoustic
absorber



direct / indirect
illumination



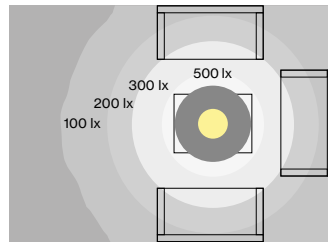
SONIC suspended



DIRECT / INDIRECT CRI ≥ 80

SYSTEM	COLOUR TEMP.	LUM. FLUX	SYSTEM	ORDER CODE
69.0 W	3000 K	↓5000/↑4940 lm	144 lm/W	0 5 9 - 7 8 2 1 5 ◆ P
	4000 K	↓5290/↑5230 lm	152 lm/W	0 5 9 - 7 8 2 1 6 ◆ P

Planning Information



SONIC suspended, 69W, 4000K
direct/indirect with absorber

ROOM VALUES

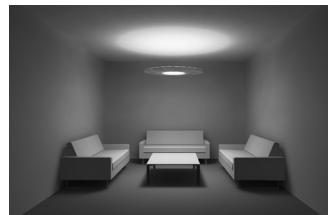
Room dimensions	5.4 × 4 × 2.8 m
Reflection factor	0.7 0.5 0.2
Maintenance factor	0.8
Mounting height	2.25 m

CALCULATION SURFACE

Surface dimensions	Floor
Surface height	0.5 m

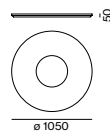
GLARE EVALUATION

Table Classification X=4H Y=8H S=0.25H	
UGR transversal	≤ 19
UGR axial	≤ 19



Acoustic accessories (optional)

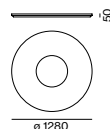
ABSORBER RING 1050



COLOUR	Ø-H (mm)	ORDER CODE
anthracite	1050-50	0 5 9 - 7 7 1 1 2 1 B
marble grey	1050-50	0 5 9 - 7 7 1 1 2 1 D
black	1050-50	0 5 9 - 7 7 1 1 2 1 L
limestone	1050-50	0 5 9 - 7 7 1 1 2 1 S
white	1050-50	0 5 9 - 7 7 1 1 2 1 W

only in combination with SONIC suspended or SONIC free standing

ABSORBER RING 1280



COLOUR	Ø-H (mm)	ORDER CODE
anthracite	1280-50	0 5 9 - 7 7 1 1 1 1 B
marble grey	1280-50	0 5 9 - 7 7 1 1 1 1 D
black	1280-50	0 5 9 - 7 7 1 1 1 1 L
limestone	1280-50	0 5 9 - 7 7 1 1 1 1 S
white	1280-50	0 5 9 - 7 7 1 1 1 1 W

only in combination with SONIC suspended or SONIC free standing

Order options

MOUNTING	8	CONTROL	◆	COLOUR	■
cable 1500 mm (min. 500 mm)	2	DALI-2	3	black grey RAL 7021	6
rod 1000 mm	4	stand alone ESSENTIAL sensor	7	pure white RAL 9010	7
				special colours	X



SOUNDCAP

COLOUR	Ø-H (mm)	ORDER CODE
marble grey	527-300	0 5 9 - 7 7 3 1 1 1 D
felt grey	527-300	0 5 9 - 7 7 3 1 1 1 G
black	527-300	0 5 9 - 7 7 3 1 1 1 L
white	527-300	0 5 9 - 7 7 3 1 1 1 W
acoustic special colours	527-300	0 5 9 - 7 7 3 1 1 1 X

only in combination with SONIC suspended or SONIC free standing; bracket colour white; other bracket colours on request

C&P Immobilien AG

Austria

Architect

INNOCAD Architecture,
Graz

Lighting Design

INNOCAD Architecture,
Graz

Photographer

Paul Ott



Used products



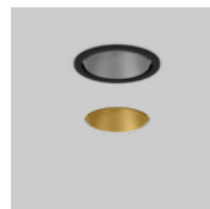
SONIC suspended



MINO 60 ceiling /
suspended system



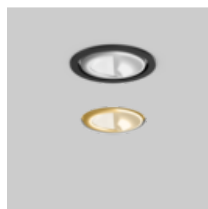
SASSO 100 round
adjustable recessed
1 lamp



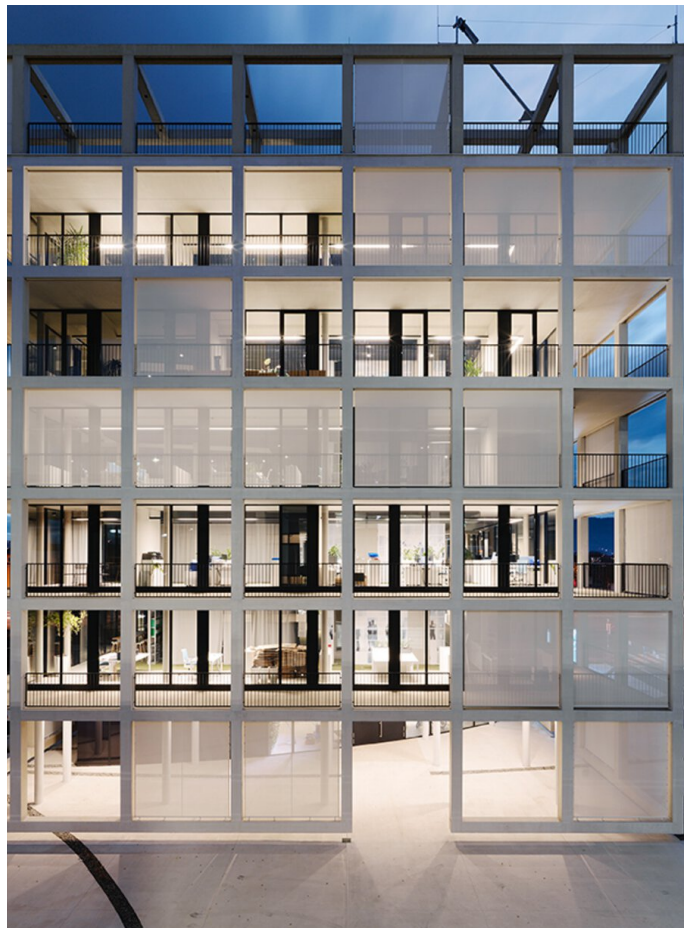
SASSO 100 round
downlight recessed 1
lamp



SASSO 100 round
wallwasher recessed
1 lamp



SASSO 100 round
wallwasher/floor
recessed 1 lamp





MERCEDES BENZ Lounge

Switzerland

Architect

Kauffmann Theilig &
Partner

Lighting Design

TLD Planungsgruppe
GmbH

Photographer

Andreas Keller
Fotografie



Used products



SONIC suspended

