

At a glance

About XAL	05	Lighting without limits
	06	Our History
	08	A Global Network
	10	Our shared Passion: Light
Competences	12	Barcelona Creative Lab <small>Budism Couture</small>
	16	Mechanical Development and Production <small>The Gherkin</small>
	20	Electronic Development and Production <small>MOSH Bar & Dinner</small>
	24	Quality Management <small>Lanserhof Sylt</small>
	28	Environmental Product Declaration (EPD) <small>Mads Nørgaard</small>
	32	Saving Energy <small>Maria Ward School</small>
	36	Customized Solutions <small>Restaurant ÄNG</small>
	40	Material and Light <small>BIG Headquarters</small>
	44	Planning Support <small>VAN DEER-Red Bull Sports</small>

Products

48 **ENVIVA**
Sustainable office concepts

52 **UNICO**
De House

56 **SPIO**
Calvin Klein

60 **MOVE IT PRO 1.5**
Dr. Ortlechner

64 **SASSO**
Land Rover Exhibition Center

Sustainability Services

68 **Sustainable Lighting**

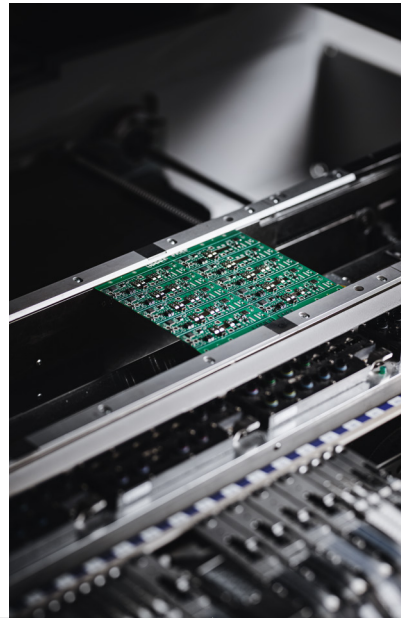
70 **Your Full-Service Lighting Provider**

“We are
pushing
boundaries
to make your
visionary
ideas
become
reality.”

Lighting without limits

For more than 35 years, we have been working with architects, designers, and planners to develop unique luminaires at the cutting edge of technology that also deliver compelling style and aesthetics. We always have one goal in mind: to push the boundaries of what is technically possible to create visionary designs. Our success in this endeavor is thanks to the outstanding work of our employees in our design labs, production, and sales locations around the world. Being there for our customers on site is fundamental to our shared success. Thanks to streamlined operations and a high level of in-house manufacturing, we can respond to our customers' unique needs and continuously expand our existing product portfolio. Meeting seemingly impossible challenges is what drives and inspires us every day. From innovative concepts to lighting innovations: a path created by crossing boundaries.

Our history



1989

Launch

Andreas Hierzer lays the foundation for the xenon lights corporate group by developing innovative halogen wire and track systems in a garage. Product modularity plays a significant role.

Xenon
LIGHTS

2000

Internationalization

After establishing the first international subsidiaries in the U.S., Germany, Switzerland, and UK follow in quick succession – today XAL operates worldwide with 30 national subsidiaries.

2002

First product series with LED technology & market-defining innovation

XAL stands for innovation and more than 20 years' experience in LED technology. Early on, we recognized that LEDs would shape the future of the lighting industry and, with a forward-looking approach, invested in our own electronics manufacturing at headquarters.

We launch the VELA round luminaire series. It has since become a timeless design classic.

The company name and logo change in 2004. Xenon Lights becomes Xenon Architectural Lighting and eventually XAL.

XAL

2011

XALcc Opening

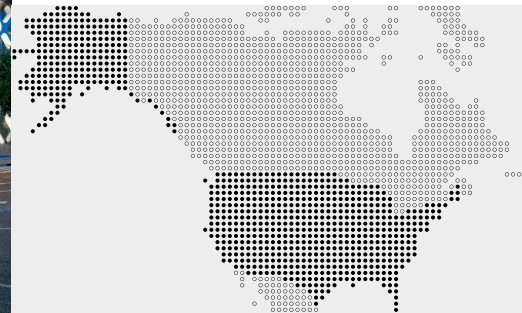
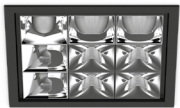
The focus remains on technological development: At our XAL Competence Center and certified laboratories, we bring together all our expertise in-house – from development to production – ensuring the highest quality.

Wever & Ducré becomes part of the XAL Group

Belgian brand Wever & Ducré's product range complements the XAL Group portfolio with decorative fixtures for the hospitality industry and residential applications.



WEVER & DUCRÉ
LIGHTING



2017

Establishment of BCL

The Barcelona Creative Lab is established in Europe's design capital. A team of international designers and lighting experts develops pioneering product innovations in close collaboration with the XAL Competence Center. From the outset, UNICO is a standout success in flexibility. The downlight offers the right solution for every requirement.

2021

Wästberg becomes part of the XAL Group

Wästberg+ merges the emotional legacy of Swedish lighting pioneer Wästberg with the technical lighting expertise of XAL Group – opening up new ways of designing, developing, and experiencing light.



2025

LAMP becomes part of the XAL group

Light is more than visibility; it shapes how we experience and care for spaces. Guided by this conviction, Ignasi Cusidó founded LAMP in 1972 in Terrassa. For over five decades, LAMP has partnered with architects and lighting designers to create lighting solutions for contemporary living. Today, LAMP stands for Worktitude for Light, a commitment that ensures lighting which respects both people and the environments it illuminates.



2026

XAL North America

Since 2026, XAL has offered a thoughtfully developed product portfolio with a refined focus on retail, high-end residential, hospitality, and office applications in North America.

A global network

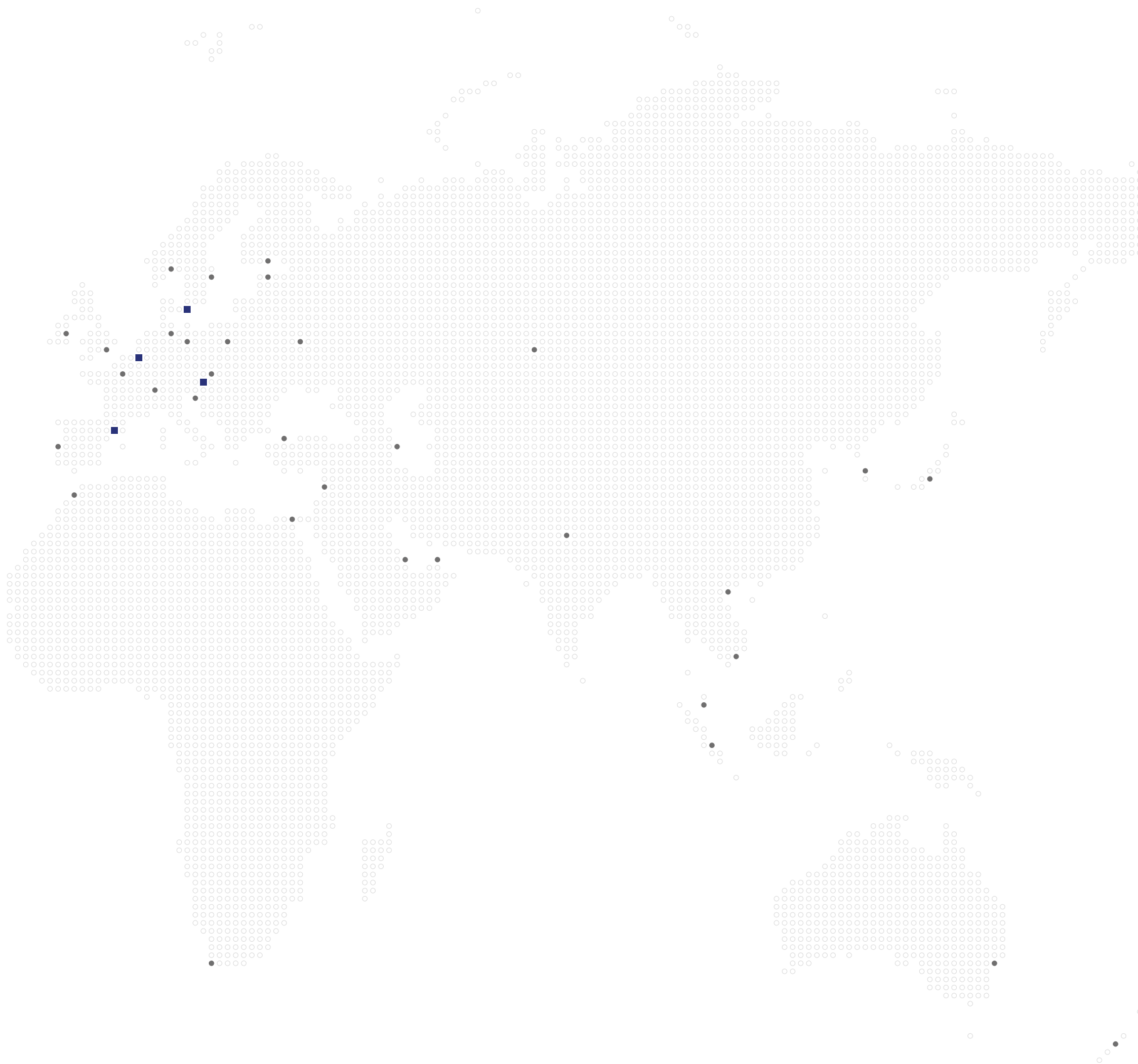


1600 employees

30 subsidiaries worldwide

5 continents

4 Brands XAL, Wever & Ducre, Wastberg+, LAMP



Our shared passion: light

Our constantly growing XAL Group brings together exceptional people who create outstanding lighting solutions that inspire customers around the world. From Barcelona to Miami, and Sydney to Oslo, 1,600 employees work with precision and dedication across three continents to bring our customers' vision to life at the highest level of quality.

Our team is as distinctive as our brands – unique in character and style. What unites us is a shared passion for light. It's felt within the team and reflected in our products. For more than 35 years, through every stage of growth and development, the XAL Group has remained one thing above all: a diverse team driven by creativity, dynamism, and the courage to explore new paths together – always with a passion for light.





Pushing the boundaries of innovative lighting

“At the Barcelona Creative Lab, we are reimagining light. Driven by our curiosity, creativity, and flexibility, we are laying the foundation for the next wave of innovations here.”

Ricard Llimos Sala, Team Leader Technical Lighting & Design



Budism Couture

Cape Town, ZA – by Peerutin Karol Architects





Light plays a crucial role in spatial design. Every client has a unique style, which is why interior designers develop concepts that harmoniously integrate light and architecture. For the BUDISM Couture project, the goal was to design a solution that supports a clean, minimalist aesthetic while subtly highlighting premium natural materials. Sophisticated color nuances create a calm, sculptural atmosphere where the high heels appear as curated objects.

Precise retail lighting with a CRI of 95+ ensures exceptional color rendering, allowing silhouettes, surfaces, and details to stand out in their truest form. MOVE IT 0.5 combines elegance with modularity; accent lighting can be adapted to evolving collections and presentation areas at any time – including decorative elements – without becoming obtrusive.

Our designers at the Creative Lab in Barcelona push boundaries and develop innovative product solutions to realize such visions. This is how the ultra-slim MOVE IT 0.5 track system was developed, combining a feel-good atmosphere with perfect lighting, minimalist design, and customizable options. With their passion for light, the designers created a unique selection of decorative insets, connectors, and adapters for the MOVE IT 0.5. It can highlight different interior materials with small, high-output spotlights, while wall insets showcase paintings in their true light. You can also choose from trendy colors like rose, chrome, gunmetal, brushed aluminum, and brushed brass for some of the insets. Different color temperatures and scenes create a pleasant ambiance, while decorative insets catch the eye. MOVE IT 0.5 opens up exciting new applications for all living spaces and wherever flexible and atmospheric lighting is required, such as in retail, hospitality, and exhibition areas.





In-house development and production

“We control every step of the development and production process. From tight bending radii to automated assembly systems, our high level of in-house production allows us to realize our customers’ visions quickly, flexibly, and to the highest quality standards.”

Christian Kügerl, Head of Product Development



The Gherkin

London, UK – by Foster + Partners
and lighting design by Zoe Faulkner,
Troup Bywaters + Anders





The Gherkin, designed by Foster + Partners, is a fantastic example of how light can be used to highlight a building's architecture. The dazzling glass-fronted skyscraper is one of London's most distinctive landmarks. The lighting concept was developed in close collaboration with lighting designer Zoe Faulkner to reflect the building's structure – especially its impressive reception area. Lighting and architecture were intended to merge into one concept: bold, adaptable, and timeless.

The building's circular floor plan was the starting point for the concept, inspired by the spiral structure that narrows toward the top. The building is the focus, and the custom lighting serves as a tool to showcase this iconic structure. Thanks to custom radii in the ceiling, the lighting reflects the architecture like a mirror. Each illuminated curve in the entrance hall ceiling is based on a profile system, precisely matched to dimensions and angles with specific bend degrees. XAL provided an expert team for the installation and commissioning of the ceiling system. Visitors entering the building see a homogeneous, illuminated imprint of the building's iconic structure.





The Gherkin

London, UK – by Foster + Partners
and lighting design by Zoe Faulkner,
Troup Bywaters + Anders



Rapid realization of visions through vertical integration

Mechanical development and production

Our research and development combines three disciplines: product engineering, lighting technology, and electronics. We develop innovative lighting solutions with the utmost precision and passion, drawing on deep expertise across all areas. From high-performance lighting technology to structural design, we refine our products until they meet both our standards and yours for aesthetics, durability, and functionality. We manufacture exclusively in-house using the latest production technologies. From profile production, turning, milling, and laser engraving to powder coating and final assembly, we handle every step of the value chain. This ensures maximum quality control and allows us to implement your visions quickly and efficiently.



Innovative lighting control

“Our goal is to offer unique solutions – from electronics and sensor technology to lighting controls. If the required electronic solution is not available on the market, we develop it ourselves.”

Gilbert Peinsipp, Head of Electronics & Innovation



MOSH Bar & Dinner
Bucharest, RO – by INNOCAD Architecture



The interior design for MOSH Bar & Dinner in the heart of Bucharest is built around an impressive concept: a transformative space that seamlessly shifts between haute cuisine, mixology, and club vibes. The concept combines hospitality, art, and design in a truly unique way. The architects at Innocad call it “the multitalented space,” where guests experience added value that goes beyond functional and aesthetic qualities. The space is divided into a garden lounge, private dining, and an epicenter – a room-in-room concept that combines a bar, two long tables, and a DJ booth. A lighting concept was needed to create the ideal atmosphere across these different areas.

The ambiance can be changed by selecting one of three pre-programmed lighting scenes. The slightly elevated dining area, enclosed by translucent curtains, offers privacy and exclusivity for smaller groups. The lighting programming includes a bright scene that highlights the dishes on the table, a second, more subdued scene for after-dinner bar service, and a party scene in which dynamic lighting takes center stage.

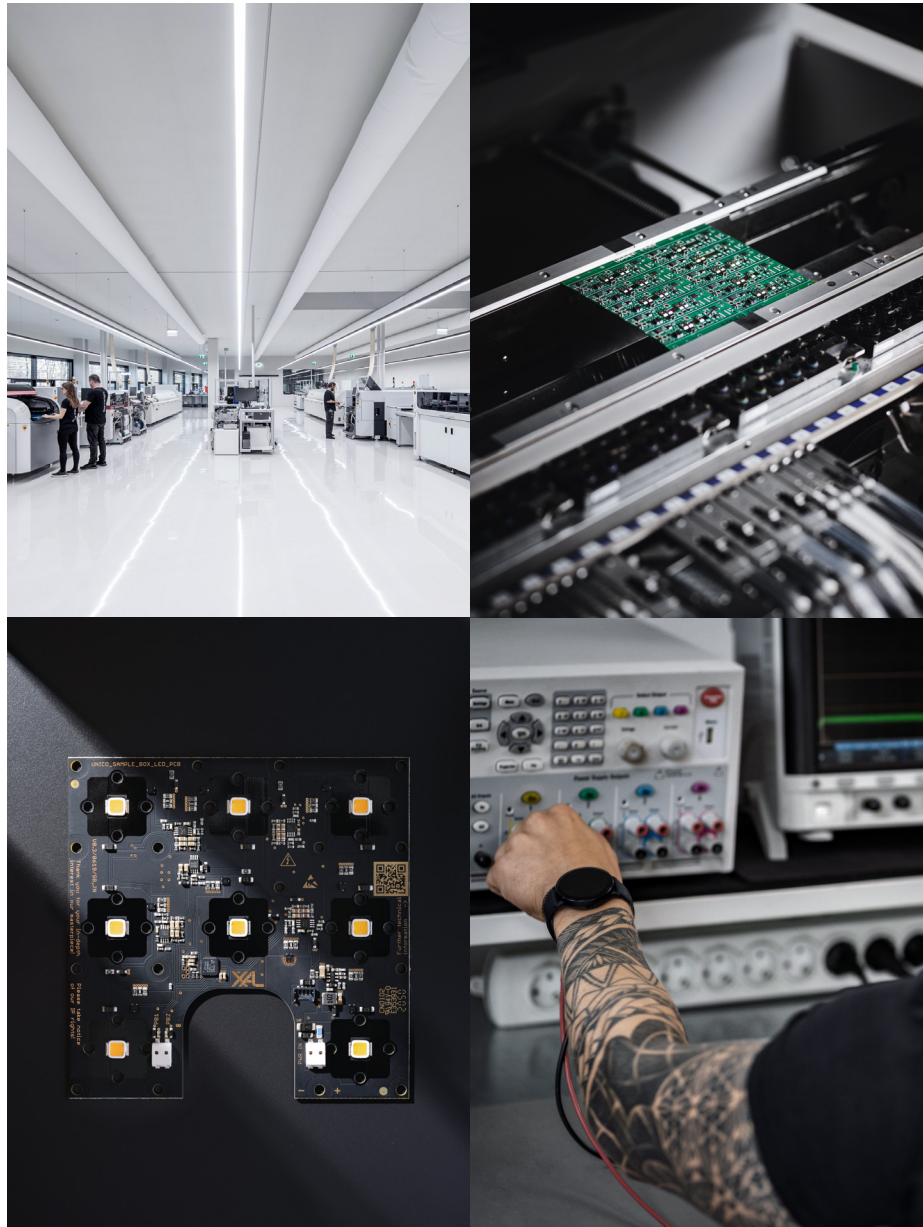
A backlit fractal pattern with stress-reducing properties – developed in collaboration with 13&9 Design and Fractals Research – is perforated into the epicenter’s dropped ceiling. Thanks to the innovative use of spotlights in combination with the perforated ceiling, an immersive lighting design is created, casting “flying” dots on the floor that shift throughout the evening. This control concept not only creates the right mood, it also reflects the city’s vibrant energy and the guests’ lively conversations.





MOSH Bar & Dinner

Bucharest, RO – by INNOCAD Architecture

**The heart of the luminaire****Electronic development and production**

We develop and produce custom hardware and software solutions that turn our fixtures into smart lighting systems. With more than 20 years of LED expertise, our own electronics production, and advanced sensor technology, we draw on in-house know-how to create intelligent, networked lighting systems – tailored and unique for your project. Our smart solutions deliver precise light with outstanding beam characteristics, as well as sensor-integrated fixtures that respond flexibly to ambient light and occupancy, while measuring CO₂ levels and temperature. This data can be efficiently transmitted to your Building Management System (BMS) to support sustainable, energy-efficient lighting concepts tailored to your requirements. From ideal lighting scenes to dynamic scenarios, we work at the heart of the fixture to bring your vision to life.



The highest quality – meticulously tested

“High-quality, durable fixtures are built on the highest quality standards. Extensive quality testing, from prototypes to production units, is our top priority. Testing – from suppliers and incoming goods through LED assembly to the finished fixture – ensures compliance with the highest quality standards.”

Anton Schulter, Head of Quality Management



Lanserhof Sylt

Sylt, DE – by Christoph Ingenhoven with
ingenhoven associates and lighting design
by Tropp Lighting Design





A former officers' home from the 1930s in the north-east of the island of Sylt is being transformed into a luxury wellness hotel. Christoph Ingenhoven and ingenhoven associates realized the Lanserhof Group's new medical health resort. Nestled in the extraordinary dune landscape, Lanserhof Sylt features the largest thatched roof in Europe at over 76,000 square feet. Carefully integrating the architecture into the surrounding protected landscape is a central goal of this project. Untreated natural materials and harmonious, streamlined rooms are the building blocks of health-promoting architecture. The lighting is designed to be restrained, minimalist, and effective, and implemented to the latest standards. It deliberately avoids dramatic effects, complementing the minimalist architecture, flowing forms, and subtle colors.

Natural daylight is the indirect element that connects the interior with the dune and coastal landscape. Artificial light is used only to highlight specific areas, create ambiance, and ensure functionality. SASSO blends discreetly into the architecture, creating a uniform appearance while accentuating individual room elements. Light-colored natural materials and floors reflect the light into the space and create a pleasant atmosphere. The architects chose a warm 3000K color temperature and excellent color rendering of Ra 97. To specifically support guests' recovery and well-being, light levels can be adjusted to the rooms' various functions, the available daylight, and guests' needs using intelligent controls – while also delivering significant energy savings. The lighting concept fulfills Lanserhof's requirements for slowing down, holistic relaxation, and recuperation.





Lanserhof Sylt

Sylt, DE – by Christoph Ingenhoven with
ingenhoven associates and lighting design
by Tropp Lighting Design

**In-house quality testing****XAL laboratories**

Our luminaires are put through their paces in our state-of-the-art XAL laboratories. Using cutting-edge technology and ISO 9001 certification, we ensure product quality and long service life. Goniophotometers are used to verify that luminous flux and light distribution meet requirements. We test all luminaires for electromagnetic compatibility in the EMC chamber. Precise measurement of color temperature and efficiency is also essential, enabling us to optimize each product for its specific application.



Sustainability through transparency

“During product development, we consider the entire product life cycle to offer the best lighting solution for every application – with optimized energy efficiency and durability.”

Christian Kügerl, Head of Product Development



Mads Nørgaard
Berlin, DE – by Kirk Design with
lighting design by Anker & Co



Fashion brand Mads Nørgaard’s German flagship store in Berlin-Mitte takes a sustainable approach to interior design, combining urban elegance with flexibility. The retail space was designed and customized by Danish design company Kirk Design. In collaboration with lighting designers from Anker & Co, a lighting solution was developed to highlight the spatial aesthetics and showcase the products effectively. The design elements combine Danish classics with industrial materials inspired by Berlin’s architecture.

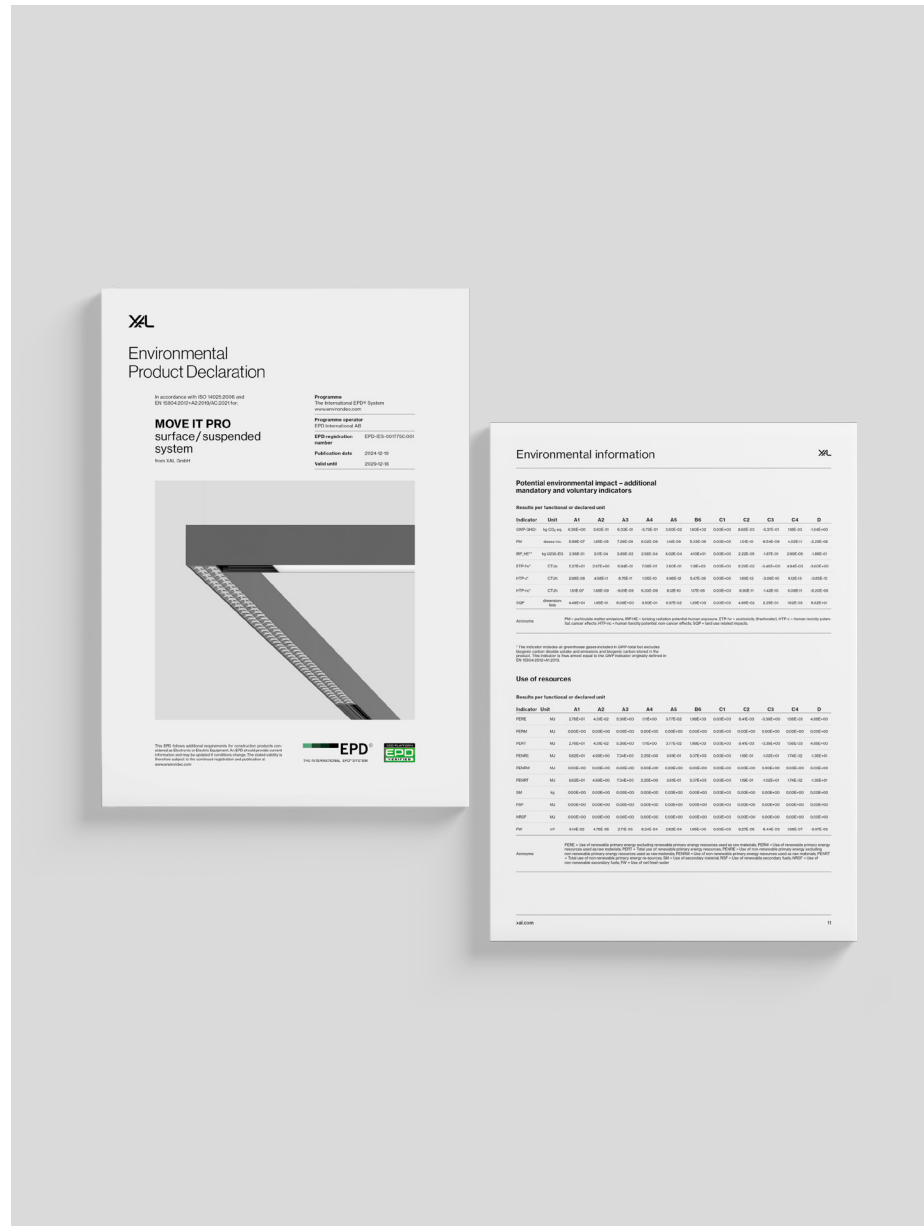
To implement the lighting solution for this project, the MOVE IT track system in raw aluminum was customized to reinforce the urban aesthetic. The track system grid was designed to meet Mads Nørgaard’s future requirements while offering a high degree of flexibility. Profile insets make it easy to adjust the beam angle, allowing staff to highlight objects as needed. Because the insets are mounted and repositioned easily – without tools – the lighting can be quickly reconfigured to accommodate changes in the store layout.

The track system also supports combining spotlights with linear light insets. An integrated sensor solution within the profile system can measure customer traffic as well as parameters such as air quality, CO₂, room temperature, and daylight harvesting potential. This enables store operators to analyze and continuously optimize energy consumption with precision.





Mads Nørgaard
 Berlin, DE – by Kirk Design with
 lighting design by Anker & Co



A luminaire's environmental impact EPDs

Sustainability is measurable. Environmental Product Declarations (EPDs) are an essential tool for documenting the environmental impact of our products – from manufacturing and use to end-of-life. They help us transparently identify opportunities for improvement during product development. Our EPDs comply with ISO 14025 and are a key resource for projects seeking LEED, WELL, or Living Building Challenge certifications. We communicate these results to our customers in a transparent, objective way – verified by independent third parties.



Optimal energy balance through smart sensor technology

“With intelligent sensor technology, you can reduce power consumption by up to 80% while still creating an ideal atmosphere.”

Christoph Link, Head of Application Management



Maria Ward School
Nuremberg, DE – by Konzeptlicht,
Gregor Sgonina





The newly built Maria Ward School in Nuremberg is an educational institution with no dark corners. Its character is defined by a bright, daylight-filled atrium; a continuous wayfinding system; colors and glass elements; spaces for retreat and exchange; plenty of room to move; and thoughtfully designed green areas. Students enter an open, welcoming environment and immediately feel at ease. This impression is reinforced by multiple visual connections to the outdoors and the direct daylight entering through the large skylight. There are no dark areas – either daylight or artificial light creates a pleasant, friendly atmosphere. The result is an inspiring setting that encourages students to reach their full potential. The lighting designers also aimed to maximize energy-saving potential.

Lighting designer Gregor Sgonina used luminaires in all areas that facilitate a high luminous flux with optimal light distribution and best visual comfort. The energy footprint of the CO₂-neutral school building is optimized using presence and daylight sensors, which has resulted in savings of 25 percent each. Combined, this results in an energy saving of 45 percent, achieved purely through the lighting management system. Thanks to these measures, the learning groups and public areas can be used without additional artificial light for much of the day.





Maria Ward School
Nuremberg, DE – by Konzeptlicht,
Gregor Sgonina



Using intelligent sensor technology

Saving energy

The full savings potential is realized when modern lighting technology, professional lighting design, and intelligent lighting controls work as one. Sensors that are seamlessly integrated into our fixtures not only create an ideal atmosphere but also enable long-term cost savings. Whether in offices, retail environments, or classrooms, sensor-controlled fixtures respond dynamically to their surroundings and adjust to occupants' needs. By connecting the fixtures to the Building Management System (BMS), they can be controlled directly via smart devices. The transmitted data can be used to assess and continuously optimize a building's energy performance and space utilization.



Lighting solutions tailored to customer requirements

“We implement customer requirements and develop bespoke lighting solutions for every challenge, no matter how difficult. Your vision is our mission.”

Reinhard Seper, Department Head Customized Solutions



Restaurant ÄNG

Ästad Vingård, SE – by Norm Architects and lighting design by Anker & Co with interior design by Karimoku

The Michelin-starred restaurant ÄNG is located in the Ästad Vingård wine region in southwestern Sweden. The steel-and-glass building resembles a light-filled greenhouse and combines contemporary cuisine with the Nordic landscape. In collaboration with Norm Architects and Karimoku, they created a precisely coordinated interplay of architecture, interior design, and culinary delights.

The goal was to create a minimalist lighting concept that would emphasize the architecture while providing a warm, calming atmosphere. Our early involvement in the planning process resulted in a holistic, customized solution: a tailor-made ARY pendant was used in the lounge and dining areas. With a CRI of 95+, colors and textures are reproduced true to life, especially at the table and in the kitchen.

For maximum flexibility, the ARY was implemented with a custom Tunable White range (1800 K–3000 K). This allows the lighting mood to be adapted specifically to the time of day and use, creating an ambiance that supports guests and employees alike.

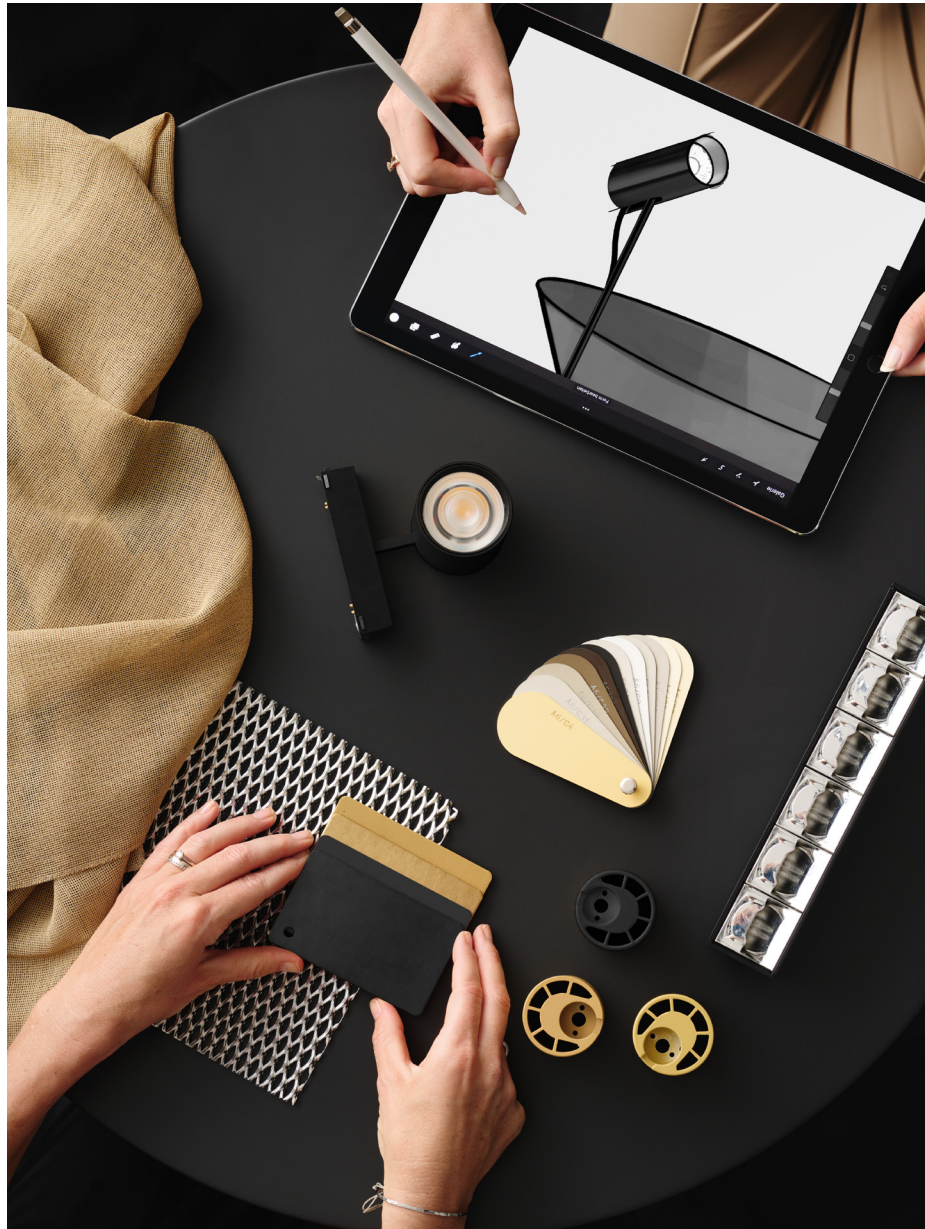






Restaurant ÄNG

Åstad Vingård, SE – by Norm Architects and lighting design by Anker & Co with interior design by Karimoku

**Bespoke luminaires
Customized Solutions**

Our daily motivation is to meet international customer requirements and incorporate personal touches into our product innovations. Thanks to our centralized production and comprehensive in-house testing options, we can implement these solutions quickly and efficiently. Anything is possible, from custom colors and bespoke radii to in-house developed sensors or innovative spotlights. We embrace new challenges every day, bring our customers' visions to life, push the boundaries of technology, and find customized solutions for a wide range of project-specific requirements.



Lighting as an extension of the architecture

“To us, material is not just a surface; it's an attitude. Raw, authentic materials give rooms character and demand solutions that blend in seamlessly.”

Manuel Feier, Head of Product Management



The seven-story Bjarke Ingels Group (BIG) headquarters rises in Copenhagen's Nordhavn harbor area, providing a modern work environment for approximately 300 employees. As the first fully integrated LEAP design, the building combines landscape architecture, engineering, architecture, and product design into a consistent overall concept – from door handles to concrete columns. The project was designed to achieve LEED Gold standards.

From the beginning, the lighting was conceived as part of the architecture – not as an addition, but as an integral part of the design. Raw aluminum fixtures complement the exposed concrete, glass, and steel without any design breaks, picking up on the raw materiality. The deliberate omission of additional surface finishes preserves the design's authenticity and coherence.

Integrating with varying ceiling heights posed a particular challenge. Precise lighting calculations and targeted placement ensure uniform, calm illumination that adapts to spatial conditions without disturbing architectural clarity. The minimalist lighting concept, featuring profile fixtures, provides structure and orientation while intuitively guiding the way through the spaces – all while remaining minimalist, efficient, and economical.







BIG Headquarters

Copenhagen, DK – by BIG Architects

**Lighting and architecture in harmony****Material and Light**

We design and develop material and surface solutions that fit precisely into the architecture and interior, ranging from raw aluminum to powder-coated variants and individually tailored details. The result is impressive, technically advanced fixtures that consistently reflect a room's materiality. We can meet almost any design requirement, including matching optics and components, whether it's untreated surfaces with a natural patina or defined colors in black, white, and custom finishes. From new construction to renovations and retrofits, our experts will accompany you from planning to implementation. They will check feasibility and develop special solutions tailored to materials, design, function, and budget.



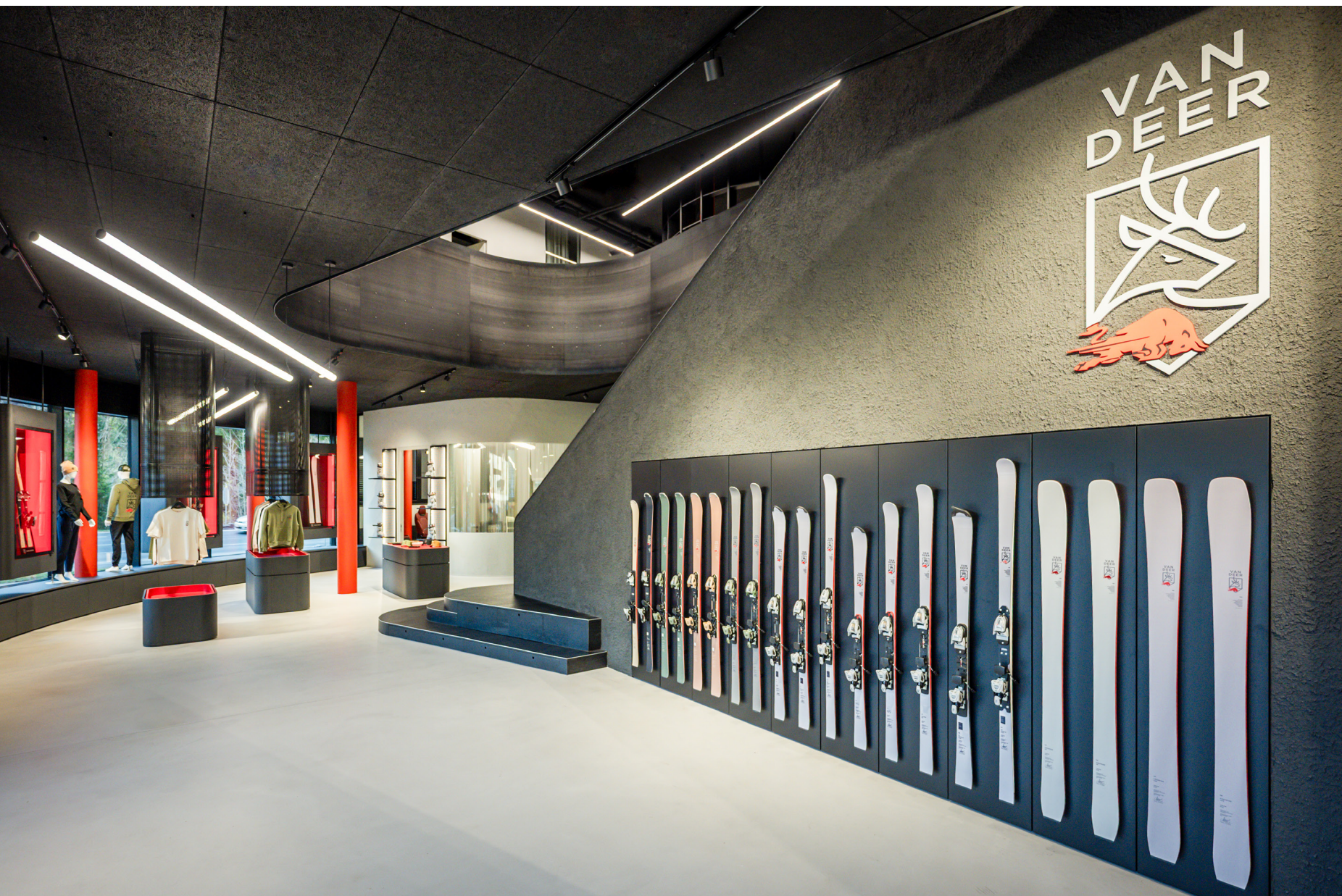
Support at every planning stage

“We provide design expertise for projects of all sizes. Benefit from detailed lighting plans, 3D visualizations, and light calculations.”

Robert Krenn, Head of Lighting Project Solutions



VAN DEER-Red Bull Sports
Scheffau, AT – by X Architekten





With its headquarters in Scheffau am Tennengebirge in Salzburg, VAN DEER–Red Bull Sports has established an international competence center for ski development, production, and distribution. Designed by X Architekten, the facility combines a ski factory, flagship store, administrative offices, and hospitality areas. The central design motif, “flow”, runs through the architecture, landscape, and interior, reflecting the brand’s core values of movement, energy, and precision.

From the earliest planning stages, the challenge was to ensure that every area of the building was perfectly illuminated while remaining true to the brand’s identity. The headquarters accommodates highly diverse spaces – from offices and collaborative work areas to the ski factory, flagship store, and bar – each requiring a unique lighting approach to support both function and experience. The strength of the brand demanded a lighting solution that would complement every aspect of the environment. Natural light in the valley is limited during winter months, making professional planning essential. Our team worked closely with architects to design lighting that would enhance the dynamic flow of the space, showcase products at their best, and support all functional requirements. For example, MITA luminaires deliver optimal light for detailed work, while SASSO spotlights highlight premium products and support customer interaction. Special attention was given to high-end skis, where TUBO luminaires were used to mimic the motion and shape of the skis, turning the display itself into a dynamic storytelling element. By integrating lighting planning from the start, we were able to create a seamless experience across all areas. Each luminaire was selected and positioned to enhance architectural details, highlight products, and guide visitors through the building naturally. The result is a headquarters where light not only serves a functional purpose but also reinforces the brand values.





VAN DEER-Red Bull Sports
Scheffau, AT – by X Architekten



Your customised lighting solution

Planning support

Planning a lighting system is often a complex task. Our lighting experts are here to support you in designing a custom lighting solution tailored to your needs. We research emerging trends, refine them, and develop bespoke concepts at the forefront of lighting technology – always aligned with your specific requirements and interior design vision. Together, we create tailored design proposals with a range of options for your project.



Maximum efficiency with minimal use of resources

“ENVIVA proves that maximum efficiency and minimalist design are not contradictions. They are the foundation of sustainable lighting for every space in modern architecture.”

Manuel Feier, Head of Product Management



Light plays a crucial role in shaping contemporary architecture. Today, architects are not only striving for exceptional design – they are equally committed to sustainability. They seek solutions that combine aesthetic clarity with responsible use of resources. Concepts that unite light, space and environmental awareness in one coherent approach. In modern office environments, retail or hospitality spaces, lighting must fulfil multiple requirements at once. It should create atmosphere, support concentration, structure zones and enhance well-being – all while minimising energy consumption and material use. The goal is no longer just visual impact, but a balance of elegance, efficiency and long-term value. To translate this vision into architecture, we developed ENVIVA: a luminaire so sustainable and minimalist that it integrates effortlessly into any space.

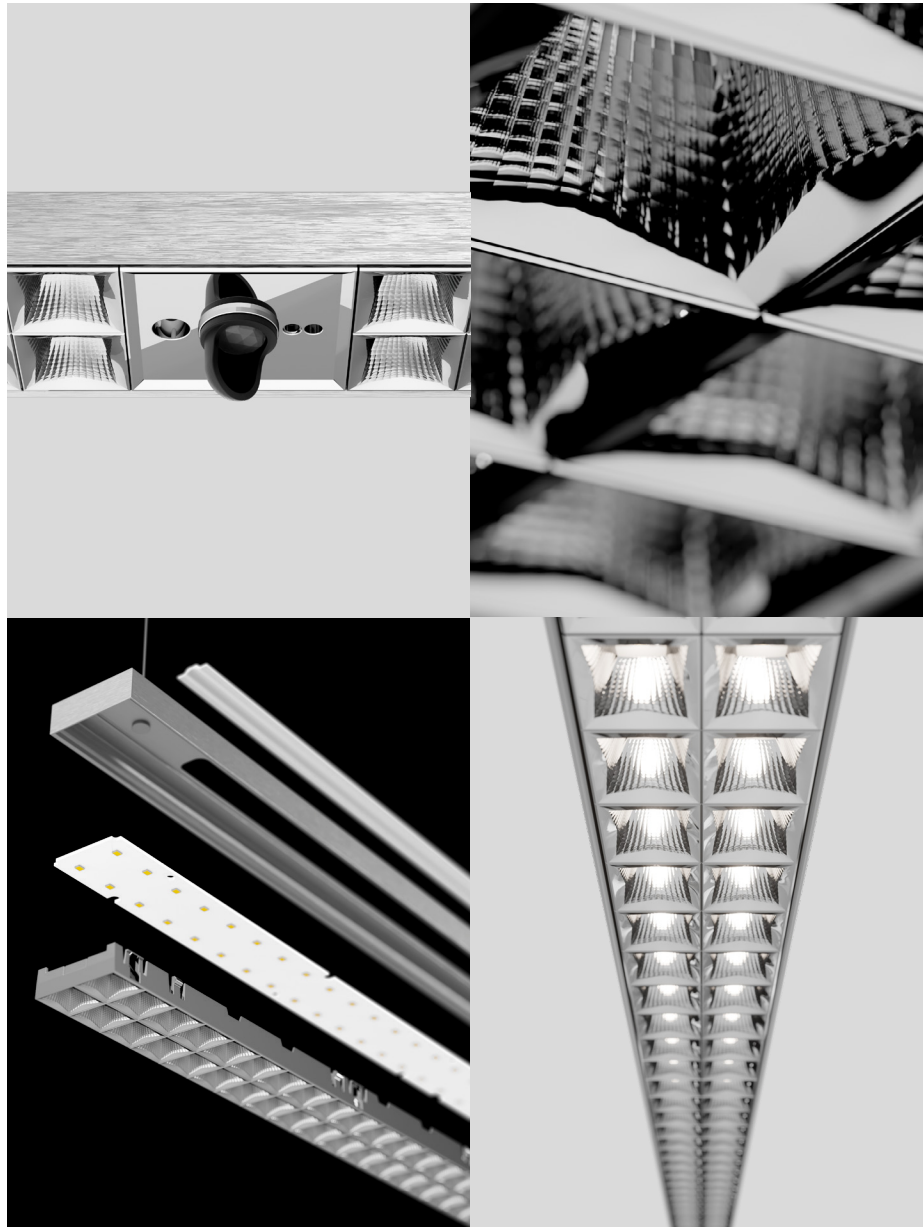
With ENVIVA, we reduce emissions across every phase of the product lifecycle. Low-emission aluminium and a consistently minimal use of materials ensure efficient production – every component fulfils its exact purpose. Compared to a similar average linear luminaire, ENVIVA generates 60% fewer greenhouse gas emissions during production and reduces electricity consumption in the use phase by 58%. ENVIVA is designed for circularity. Thanks to a patent-pending mechanism, the individual components can be dismantled and separated easily without the need for tools. This means that the individual parts always find their way back into the loop. We are proud that ENVIVA suspended (louver, spotline) is Cradle to Cradle Certified®. Full Scope at the Bronze level according to version 4.0.







XAL Office
Graz, AT



Minimalist design meets long service life
ENVIVA

With an efficiency of up to 184lm/W, ENVIVA saves energy, costs and CO₂. Despite its slim profile of just 15 mm, it provides direct and indirect lighting as well as glare-free working light (up to $UGR \leq 10 / 65^\circ \leq 1500 \text{cd/m}^2$). It is made of Hydro low-carbon aluminium and is available in raw aluminium, black or white. High-quality, long-lasting components and a timeless design ensure that ENVIVA is both visually and technically durable. All components can be easily separated and recycled – meaning ENVIVA always remains firmly rooted in the future.



One luminaire – 92.2 quadrillion options

“UNICO is the perfect product for lighting designers. With just one luminaire, you can create a wide variety of lighting scenarios. UNICO offers the right solution for every need.”

Paul Fraissler, Managing Director



De House

Saint Niklaas, BE – by Jacobsen Architectura



Understated, high-quality lighting for a renovated family home – achieved using just one type of luminaire that blends seamlessly into the architecture and landscape. Generous glass façades open up views of the lake, and a central staircase, flooded with daylight through a skylight, connects all three levels.

Materiality and light emphasize the connection to nature: locally sourced wood, natural stone, and wide openings create a fluid transition between indoors and outdoors. This is complemented by an integrated UNICO lighting concept. The square, recessed multi-downlight with application-specific optics serves different purposes depending on the area – in this family home a wallwasher was used for vertical surfaces and a downlight for uniform ambient lighting. With a correlated color temperature (CCT) of 3000K, UNICO creates a warm, inviting atmosphere while remaining visually discreet. The result is a harmonious whole: tropical lightness meets the essence of a Belgian residential building – precisely staged by unobtrusive lighting that ties everything together.





De House

Saint Niklaas, BE – by Jacobsen Architectura

**Designing bespoke light****UNICO**

UNICO offers unique flexibility. The downlight provides the right solution for every requirement. With six different shapes, eleven light insets, three color temperatures, two product colors, and three reflector materials, UNICO offers unlimited creative freedom in lighting design. The highly efficient micro-faceted reflectors ensure precise light cut-off edges, enabling exact and sophisticated lighting planning. A solution for every lighting concept.



Almost invisible – maximum effect

“Hidden and yet impactful. SPIO skillfully showcases objects while remaining almost invisible – for a seamless, minimalist overall impression.”

Thomas Szurok, Director Global Key Account Management



Calvin Klein's American parent company PVH has equipped the brand's new store with the Chalk design concept, creating an impressive brand experience on one of the world's most renowned fashion streets: the Champs-Élysées in Paris. Spanning approximately 6,460 sq ft across three levels, the store establishes the Calvin Klein brand in the heart of the city and presents its full lifestyle collection to customers. The flagship's façade incorporates the site's original stone. Large, bright storefront windows flood the interior with natural daylight, inviting customers and passersby alike to explore the carefully curated retail environment, where the brand's distinctive vision takes center stage. Each floor provides a purist backdrop for presenting the latest collections. The store is designed to deliver an elevated setting for distinctive, seasonal experiential concepts.

SPIO reinforces the modern, minimalist, and sensual store design and creates a distinctive customer experience through precise yet understated lighting. The lighting concept accentuates contemporary surfaces and monochromatic color palettes. Inviting fitting rooms with wood accents, textured carpeting, and soft lighting create a refined and comfortable atmosphere. The Champs-Élysées flagship embodies everything Calvin Klein stands for, creating an environment that inspires customers to experience the Calvin Klein lifestyle – not only through its products, but also through its architectural and spatial aesthetics.



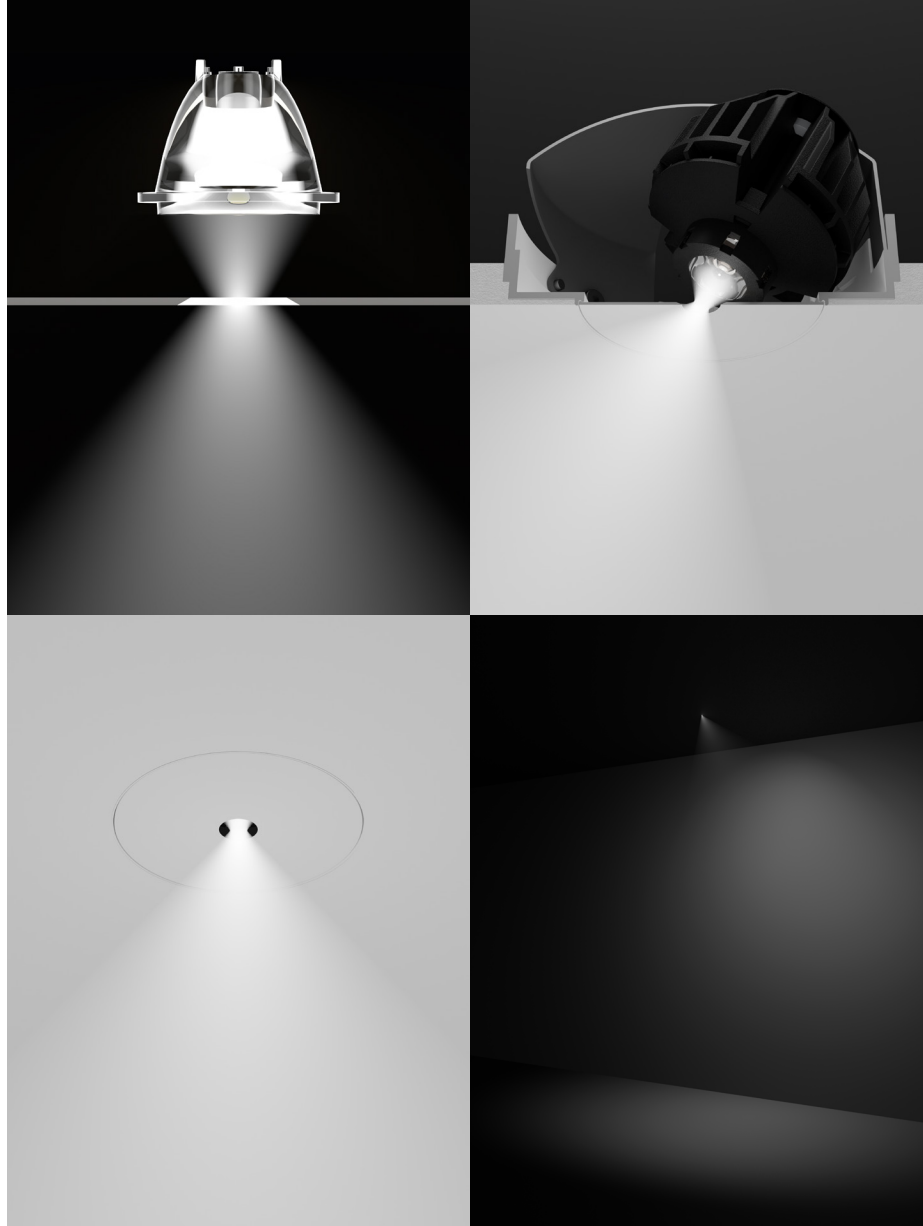
Calvin Klein
Paris, FR – by Hyphen with interior design
by Calvin Klein Concept Team and
lighting design by Mindseye Lighting





Calvin Klein

Paris, FR – by Hyphen with interior design
by Calvin Klein Concept Team and
lighting design by Mindseye Lighting



Almost invisible
SPIO

The round, recessed SPIO spotlight delivers precise lighting while remaining visually discreet. Available in flangeless or flanged versions, it creates a refined and controlled lighting effect. Designed for practical installation and maintenance, SPIO is fully serviceable from below the ceiling. The housing can be painted to match the ceiling, allowing the spotlight to integrate seamlessly into the architectural surface. With its small 1/2 inch optical aperture, SPIO remains almost invisible – yet its calm, effective lighting presence is unmistakable. The recessed round spotlight is available with three beam angles, 15°, 35° or 44°. SPIO allows 360° rotation within the housing for maximum aiming flexibility. The wallwasher floor optic additionally provides soft, uniform illumination of wall and floor surfaces. Versatile spatial design through intelligent, discreet lighting solutions – that is SPIO.



One system, all spaces, no limits

“As a design-oriented line-voltage track system, MOVE IT PRO 1.5 opens up virtually limitless design options for creating arrangements tailored to the space and architecture.”

Martin Müller, Department Head, Product Management



Dr. Kerstin Ortlechner
Vienna, AT – by Studio Riebenbauer





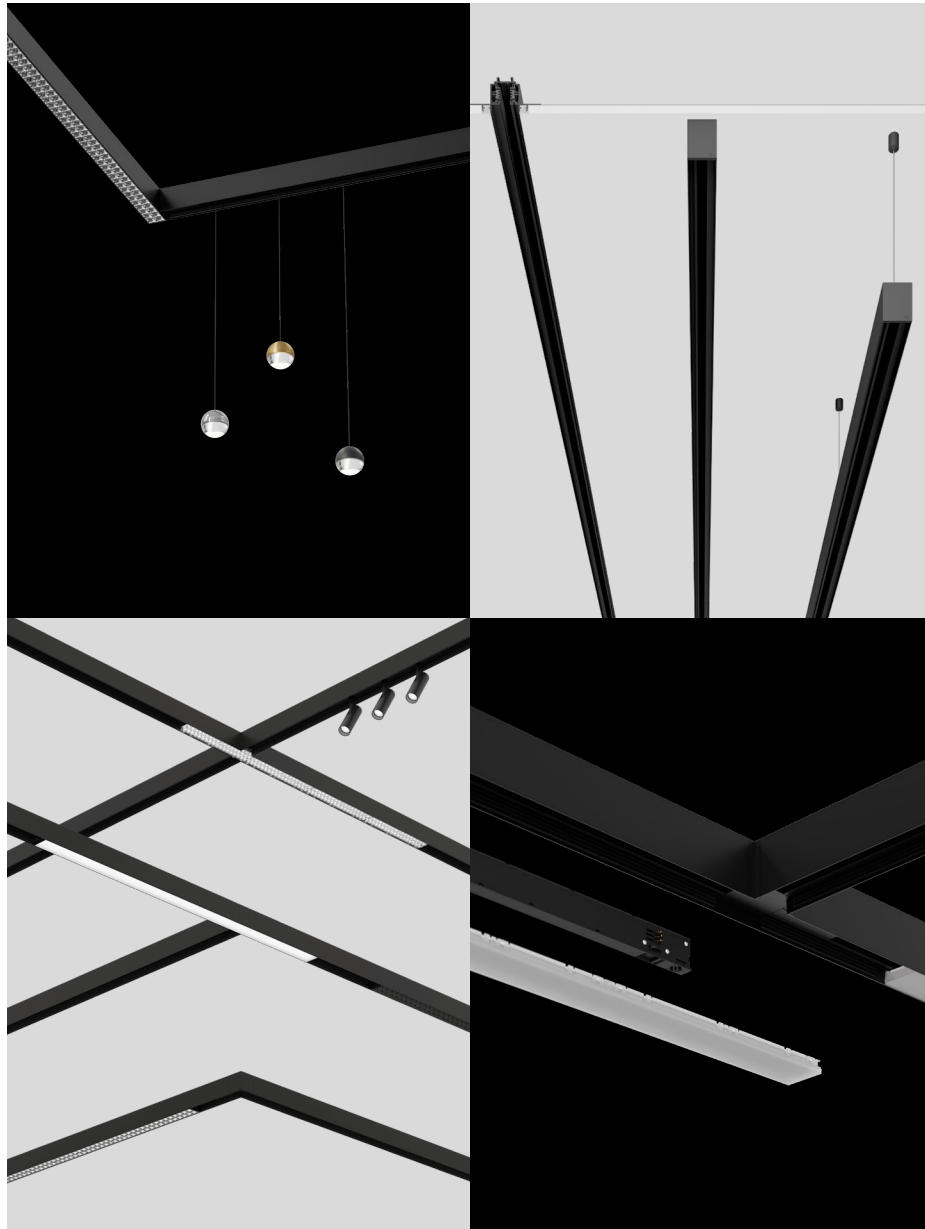
An old church in Vienna's 7th district. An extraordinary property – and a unique opportunity. Dr. Kerstin Ortlechner, an internationally renowned dermatologist based in Vienna, was searching for a new practice and was immediately captivated by the sacred aesthetics of the space. Together with Studio Riebenbauer Vienna Los Angeles, a design concept was developed that preserves the building's sacred character while contrasting it with a futuristic, minimalist aesthetic. From the outset, the goal was to create a medical practice that would set new international benchmarks and attract global attention within the architecture and design community – for its design language, spatial concept, and lighting. The aesthetic is minimalist: light gray walls, polished aluminum surfaces and mirrors, and an entrance accentuated by LED luminaires. At the center of the former nave, two mirrored volumes were designed as treatment rooms. A former confessional was transformed into a beauty room. Extensive renovation work – including new skylights and a large sliding glass door – was required to adapt the building, originally constructed in 1860, for use as a contemporary practice.

Lighting posed a particular challenge. While decorative luminaires from Studio Riebenbauer's own SR-Products brand serve as visible design elements, the XAL luminaires were intended to remain subtly in the background, creating the appropriate atmosphere for the space – both sacred and futuristic. Due to the architectural conditions, suspended luminaires were required. With MOVE IT PRO 1.5, the character of the space was preserved and the nave's open volume remained largely unchanged. In the treatment rooms, however, optimal lighting conditions were essential. The result is a bold and internationally distinctive spatial concept – a medical practice unlike any other.





Dr. Kerstin Ortlechner
Vienna, AT – by Studio Riebenbauer



One system for all applications

MOVE IT PRO 1.5

The versatile MOVE IT PRO 1.5 line-voltage track system offers exceptional design freedom. This two-circuit, 0–10 V and DALI-capable track system features flexible indirect lighting insets that enable a comprehensive lighting solution without compromising the architectural design. Tool-free installation, along with a wide range of linear luminaire insets and adjustable spotlights, provides maximum creative flexibility for offices, restaurants, retail environments, educational facilities, and public spaces. The combination of high-quality, high-efficiency optics and advanced driver technology delivers excellent performance, achieving efficacies of up to 190 lm/W while providing precise, low-glare light distribution.



A unique brand experience

“The precision of our spotlights creates an atmosphere that welcomes visitors, guides them visually, leaves an impression, and reflects a brand’s modern-luxury strategy.”

Javier Nieto, Managing Director



Land Rover Exhibition Center
Hanoi, VN – by Studio Hagger and
lighting design by kobi lighting studio



For the world’s first Jaguar Land Rover (JLR) showroom in Hanoi, lighting designers from kobi lighting studio – working in collaboration with JLR, Pon Phu Thai Mobility, and James Hagger – developed a lighting concept fully aligned with the brand’s modern-luxury strategy. Every detail of the project reflects Jaguar and Land Rover’s commitment to quality, sustainability, and innovative lighting. Purposeful illumination creates an atmosphere that welcomes, guides, and impresses visitors as they move through the space – while setting a new benchmark for luxury automotive retail.

To achieve this, the lighting designers challenged conventional norms to create a distinctive customer experience. The lighting concept is based on two pillars. The first is architectural, using a dynamic flow of light to define and shape the space. The second is product-focused, with lighting that subtly emphasizes the sporty curves, intricate details, and unique signature of each Jaguar Land Rover vehicle. SASSO spotlights deliver ideal results for both approaches. The concept aims to redefine automotive retail by placing the brand at the center of a human-centric, emotionally engaging journey. Sustainability and efficiency also play a central role. The glass façade allows generous daylight penetration, helping reduce energy consumption, while the precisely planned lighting solution with color warm dimming maximizes visual impact. Each day, the showroom comes to life in a carefully orchestrated interplay of light.





Land Rover Exhibition Center
Hanoi, VN – by Studio Hagger and
lighting design by kobi lighting studio



Unique radiance
SASSO

The product family offers a wide range of shapes and color options to create the ideal atmosphere for every application – whether in showrooms, restaurants, bars, hotel rooms, or stairwells. Direct lighting is provided by downlights with different beam angles. Wallwasher and wall-floor optics deliver uniform wall and floor illumination, while SASSO adjustable skillfully sets highlights within the space. SASSO flexibly adapts to your specific designs and color preferences.



Sustainable lighting

“As the XAL Group, we want to make a contribution to achieving the Paris climate targets and are committed to the Science-Based Targets initiative (SBTi).”

Martin Dlaska, Managing Director, XAL Holding GmbH



Our efforts for a sustainable future

As a business, we see our role in a broader context – one that encompasses both people and the planet. We are committed to acting responsibly today and contributing to a livable future.

That is why we are part of the Science Based Targets initiative (SBTi) and have established emissions reduction targets aligned with climate science and validated by SBTi. Our objective is to achieve net-zero greenhouse gas emissions across our entire value chain by 2050 at the latest. By 2032, we aim to reduce our Scope 1 and Scope 2 emissions by 75% compared to the 2019/20 baseline, and our Scope 3 emissions by 40% compared to the 2023/24 baseline. Over the long term, we are targeting a 90% reduction across all emission scopes by 2050.

These targets are based on the latest scientific guidance for limiting global warming to 1.5 °C and underscore our long-term commitment to climate action. We publish our Sustainability Report annually to transparently document progress, initiatives, and results.

We regularly have our corporate social responsibility evaluated holistically by EcoVadis. In 2025, XAL GmbH in Graz was awarded the Platinum Medal. The platinum level is only awarded to the top 1% of companies.



Key production sites, including our headquarters, have maintained externally accredited management systems for quality (ISO 9001), environmental management (ISO 14001), and occupational health and safety (ISO 45001) since 2015 and 2019, respectively. In 2020, we joined the United Nations Global Compact initiative. Its principles guide our internal collaboration, stakeholder engagement, supply chain management, and resource strategies. Through our activities, we already contribute to eight of the 17 UN Sustainable Development Goals (SDGs), including climate protection, education and training, and workplace health and safety.

Passion for light.

XAL GROUP

Nachhaltigkeitsbericht 2024 | 2025

Sustainability report

Achieving our goals requires reliable, transparent, and comparable data. This data enables us to understand our current position and anticipate future challenges. Our reporting is guided by internationally recognized frameworks, including the Greenhouse Gas Protocol and the Global Reporting Initiative (GRI), and considers environmental, social, and ethical aspects of sustainability in line with ESG principles.

Looking ahead, we will align our reporting with the European Sustainability Reporting Standards (ESRS) to further enhance transparency and comparability. We invite you to accompany us on our journey toward climate neutrality. Our Sustainability Report provides detailed insight into our achievements and our ongoing efforts to operate more sustainably.



Sustainability Certifications

Transparency and measurable data are essential to sustainability. That is why we conduct life-cycle assessments and regularly publish the externally verified results in our Environmental Product Declarations (EPDs), in accordance with ISO 14025 and EN 15804. These analyses provide a solid foundation for product development, enabling us to identify and implement targeted improvements.

In this context, we are proud that ENVIVA suspended is the first XAL product to achieve Cradle to Cradle Certified® Full Scope at the Bronze level (Version 4.0). This certification confirms a circular design approach – from material selection through end use. ENVIVA is designed to be fully separable, enabling repair, reuse, and responsible material cycles without the use of adhesives or permanent connections.



Cradle to Cradle Certified® is a registered trademark of the Cradle to Cradle Products Innovation Institute.



Results of the environmental performance indicators. Table with columns: Indicator, Unit, 2022, 2023, 2024, 2025, 2026, 2027, 2028, 2029, 2030, 2031, 2032, 2033, 2034, 2035, 2036, 2037, 2038, 2039, 2040. Includes sub-sections for Mandatory and Additional indicators.

Your full-service lighting provider



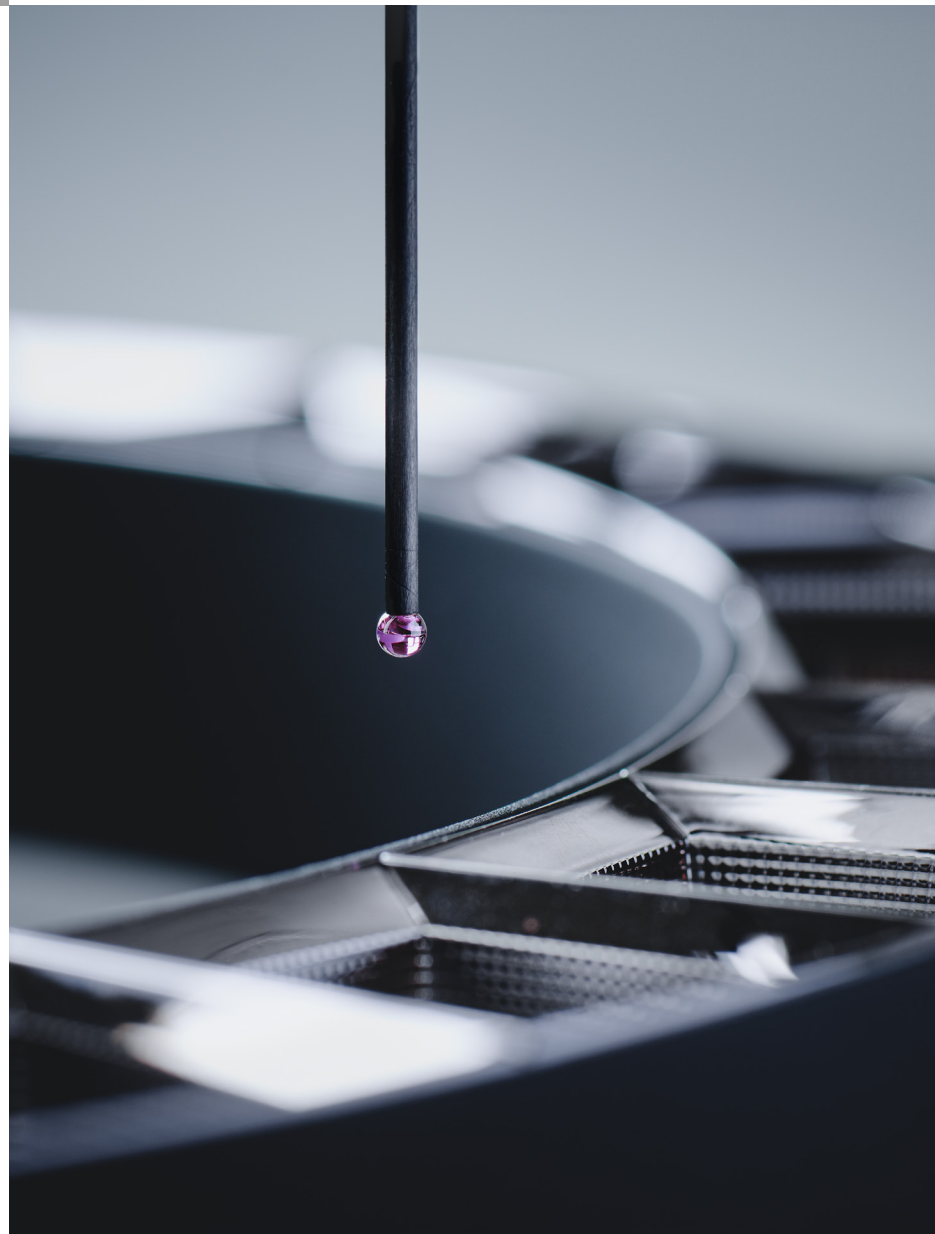
Planning Data

From Revit® BIM, pCon, and ABK building data to our image gallery, we provide a broad range of digital planning and visualization tools, 3D product configurations, GLDF files, and complete technical luminaire data, including IES, LDT, ROLF, ULD, and DWG (2D/3D) files. In addition, we offer Environmental Product Declarations (EPDs) and related services that deliver comprehensive product information and streamline the specification and planning process with XAL luminaires.

pCon **bimobject®**

Certified for all markets

To bring international lighting visions to life, our luminaires are engineered to meet a broad range of national and regional standards – including UL, FCC, ENEC, CCC, and BIS – ensuring reliable global distribution. As an active participant in the international IEC CB Scheme, we continuously expand our certification portfolio and support numerous national approvals, such as PSE, KC, RETILAP, KUCAS, and SASO. All luminaires are developed entirely in-house in close collaboration with globally accredited testing laboratories. Our state-of-the-art EMC and lighting laboratories feature cutting-edge infrastructure and advanced testing technology designed to meet the highest international standards. Accredited to ISO/IEC 17025, our labs guarantee impartial testing, maximum precision, and strict product confidentiality. This enables us to efficiently address complex, country-specific requirements and deliver reliable certification results worldwide.





Planning Support

Our lighting experts support projects of all sizes with comprehensive lighting design services, including detailed lighting layouts, CAD drawings, 3D visualizations, and lighting calculations. Our services also include budget coordination as well as support with certification and compliance requirements.

You can rely on XAL as a dynamic and dependable project partner – providing expert support at every stage of the project.



Customized Solutions

Even the most comprehensive product portfolio cannot meet every project requirement. That is why we offer Customized Solutions – lighting solutions tailored to your architecture, design intent, and technical requirements.

Depending on project size and scope, we can adapt existing XAL products – such as custom finishes, lengths, radii, optics, or control components – or develop entirely new, project-specific solutions. With extensive in-house engineering and manufacturing capabilities, we support you from initial concept and prototyping through planning, production, and commissioning – ensuring the final solution integrates seamlessly into your design and performs as specified.



On a personal note

We're committed to developing projects in close dialogue with architects and planners – refining every detail to make each solution truly unique.

From selecting the perfect lighting solution for your specific project to supporting you in planning energy-efficient concepts, we are your experts in all aspects of lighting. We will support you throughout every phase and look forward to realising your vision together.

Let's talk about your project: office.us@xal.com

XAL North America Inc.

8380 NW 64th st
Miami, FL 33166
USA

T +1 (305) 399-9301
office.us@xal.com

All locations at:

[xal.com/us/find-location](https://www.xal.com/us/find-location)



Photographers' index

Michael Königshofer (p. 6 – 7 | 15 | 23 | 27 | 39 | 47 | 55 | 70 – 71), Elisabeth Mörz (p. 6 | 19 | 23), Miloš Martinović (p. 7), Miquel Llonch (p. 7), Simon Menges (p. 7), Kurt Kuball (p. 7 | 23 | 50 | 68), Alfonso Quiroga (p. 7), Tim Ertl (p. 10 – 11), Mirza Kahriman (p. 10), Hannes Otté (p. 10 – 11), Stella Kager (p. 10 – 11), Luca Tribondeau (p. 11), Elsa Young (p. 12 – 14), Andy Perkins & Nigel Young / Foster + Partners (p. 16 – 18), Paul Ott (p. 20 – 22), HGEsch (p. 24 – 26), Alex Otto (p. 28 – 30), Linus Lintner (p. 32 – 34), Anker & Co (p. 36 | 38 | 40 – 42), Jonas Bjerre-Poulsen (p. 37), Philipp Reiter, VAN DEER-Red Bull Sports (p. 44 – 46), Fernando Guerra / FG+SG (p. 52 – 54), Miguel Jiménez (p. 56 – 58), Julius Hirtzberger (p. 60 – 62), Jaguar Land Rover (JLR) (p. 64 – 65)

Legal information

The information in this catalog is accurate at the time of printing, is nonbinding, and is provided for informational purposes only. We assume no liability for products that differ from the images or information shown. We reserve the right to make changes to our products at any time. All orders are accepted exclusively in accordance with our General Terms and Conditions of Use and Terms of Sale, available at www.xal.com/us, in their current version.

