



## Description

**EN** Midget luminaire profile made of extruded aluminium; surface black or natural anodised;  $\pm 15^\circ$  tiltable; plug and play electrical connector system for toolless mounting; flexible connectors for mechanical and electrical connection available; available in 4 beam angles; passively cooled high-power LED system; available in the light colours 3000K and 4000K; min. 90% of the luminous flux after 50 000 hours; colour rendering  $\text{CRI} \geq 95$  ( $\text{R}_9 \geq 90$ ); variant with 50 or 75mm light point spacing; 700mA converter plug and play; converter separately available; degree of protection IP20; PC II (power supply) or PC III (light insets); optionally non-dimmable or DALI-2 control

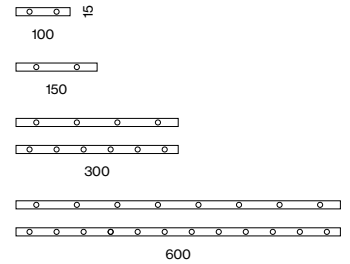
**FR** Profil de luminaire miniature en aluminium extrudé ; surface noire ou anodisée naturel ; orientable à  $\pm 15^\circ$  ; système de branchement électrique par trous métallisés pour montage sans outil ; raccord flexible disponible pour raccordement mécanique et électrique ; disponible dans 4 angles de diffusion différents ; système à LED haute puissance à refroidissement passif ; livrable dans les couleurs de lumière 3000 K et 4000 K ; min. 90 % du flux lumineux au bout de 50 000 h de durée de vie ; rendu de couleur  $\text{CRI} \geq 95$  ( $\text{R}_9 \geq 90$ ) ; variante avec distance entre les points lumineux 50 ou 75 mm ; convertisseur de 700 mA préassemblé prêt à brancher ; convertisseur à commander séparément ; genre protection IP20 ; CP II (alimentation électrique) ou CP III (éléments lumineux) ; en option non gradable ou commande via DALI-2

**NANO** turn  
recessed

## Quickinfo

3000 K, 4000 K  
 $\text{CRI} \geq 95$  ( $\text{R}_9 \geq 90$ )  
 L90 @ 50 000 h  
 up to 1130 lm/m  
 non DIM, DALI-2

## Types



## Colours



## Light distributions



### Order options

#### COLOUR TEMPERATURE

|                     |   |
|---------------------|---|
| 3000K CRI≥95 90lm*  | 5 |
| 4000K CRI≥95 100lm* | 6 |

\*per LED | CRI≥95 (R9≥90) | 350mA | 60°C

#### MATERIAL COLOUR

|                    |   |
|--------------------|---|
| anodised aluminium | 6 |
| anodised black     | 8 |

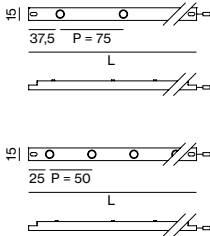
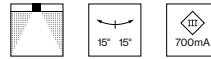


#### BEAM ANGLE

|                |   |
|----------------|---|
| spot 20°       | S |
| medium 30°     | M |
| flood 40°      | F |
| wide flood 65° | W |



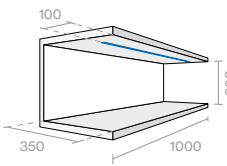
### NANO turn



P = LED pitch

| SYSTEM POWER / VOLTAGE | NO. OF LEDS | L   P (mm) | ORDER CODE      |
|------------------------|-------------|------------|-----------------|
| 2x1.2W / 3V            | 2           | 100   50   | 007-40101 1 1 1 |
| 2x1.2W / 3V            | 2           | 150   75   | 007-40011 1 1 1 |
| 4x1.2W / 6V            | 4           | 300   75   | 007-40031 1 1 1 |
| 6x1.2W / 9V            | 6           | 300   50   | 007-40131 1 1 1 |
| 8x1.2W / 12V           | 8           | 600   75   | 007-40061 1 1 1 |
| 12x1.2W / 18V          | 12          | 600   50   | 007-40161 1 1 1 |

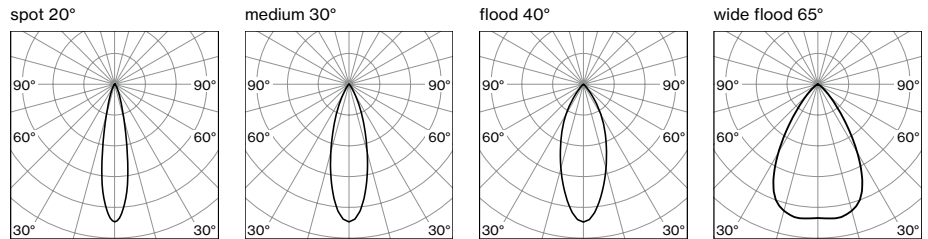
#### ILLUMINANCE EXAMPLE (E<sub>max</sub> in lux)



| BEAM ANGLE | COLOUR TEMP. | HEIGHT 0.3 m         | HEIGHT 0.3 m         |
|------------|--------------|----------------------|----------------------|
|            |              | 3x(4x1.2W)<br>P=75mm | 3x(6x1.2W)<br>P=50mm |
| 20°        | 3000K        | 5335                 | 8025                 |
| 30°        | 3000K        | 4765                 | 7142                 |
| 40°        | 3000K        | 3936                 | 5902                 |
| 65°        | 3000K        | 3030                 | 4534                 |

reflection factors 0.2/0.5/0.7 | maintenance factor 0.8

#### LIGHT DISTRIBUTION



### Order options

#### LENGTH

|         |   |
|---------|---|
| 175 mm  | 0 |
| 1000 mm | 2 |
| 2000 mm | 4 |
| 4000 mm | 6 |

### Electrical accessories

#### CONVERTER supply 220-240V AC, 700 mA, 50-60 Hz, PC II

incl. power cable 2 m + connection cable with plug 1 m

| TYPE                   | LEDS  | CABLE (m) | L-W-H (mm) | ORDER CODE  |
|------------------------|-------|-----------|------------|-------------|
| 8 W / 2,5-12 V non DIM | 2-6   | max.18    | 64-34-21   | 007-1953110 |
| 10 W / 7-14 V non DIM  | 6-8   | max.5     | 95-53-25   | 007-1953210 |
| 20 W / 2-28 V non DIM  | 2-16  | max.10    | 111-52-22  | 007-1953310 |
| 45 W / 20-54 V non DIM | 14-32 | max.11    | 215-70-31  | 007-1953510 |
| 20 W / 2-28 V DALI-2   | 2-16  | max.10    | 111-52-22  | 007-1953330 |
| 38 W / 10-54 V DALI-2  | 8-32  | max.11    | 147-44-30  | 007-1953530 |

#### SPLITTER SERIAL, AWG22

| TYPE                           | INPUT / OUTPUT      | L-W-H (mm) | ORDER CODE  |
|--------------------------------|---------------------|------------|-------------|
| splitter 700 mA + cable 500 mm | 1x socket / 9x plug | 85-50-10   | 007-1959310 |
| adapter cable 100 mm           | 1x socket / 1x plug | -          | 007-1963210 |

#### EXTENSION CABLE

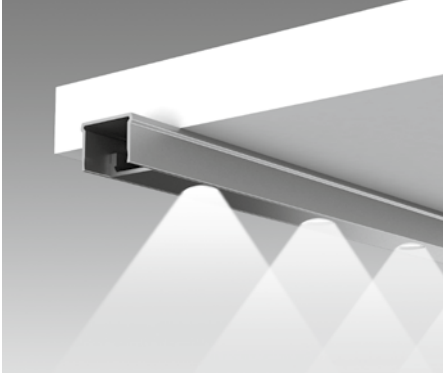
| TYPE            | INPUT / OUTPUT      | L (mm) | ORDER CODE  |
|-----------------|---------------------|--------|-------------|
| extension cable | 1x socket / 1x plug | -      | 007-1961110 |
| extension cable | 2x plug             | 75     | 007-1962110 |
| extension cable | 2x plug             | 100    | 007-1962210 |
| extension cable | 2x plug             | 125    | 007-1962310 |

### Other accessories

| TYPE  | ORDER CODE     |
|---|----------------|
| mounting connector: ±90° tiltable, ±45° rotatable | 007-400000 1 1 |
| end feeder (pair): ±90° tiltable                  | 007-400010 1 1 |

# NANO channels

## Channel 90



**EN** Mounting channel for NANO modules for recessed or surface mounting; also as higher variant (90+); variant with straight; for use with a beam angle of 90° onto the lower shelf; mounting tape available

**FR** Canal de montage pour les modules de NANO pour montage encastré ou non; également disponible en version plus élevée (90+); modèle avec coupe droite; pour applications avec sens de diffusion à 90° sur l'étagère inférieur; ruban adhésif de montage disponible

## Channel 60



**EN** Mounting channel for NANO modules for recessed or surface mounting; with straight cut; for use with a beam angle of 60° onto the lower shelf; optimum illumination of shelf niches with equal shelf height and depth; mounting tape available

**FR** Canal de montage pour les modules de NANO pour montage encastré ou non; modèle avec coupe droite; pour applications avec sens de diffusion à 60° sur l'étagère inférieur; éclairage optimal des niches d'étagère avec même hauteur et profondeur d'étagère; ruban adhésif de montage disponible

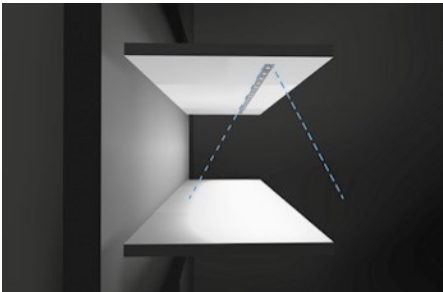
## Channel 45



**EN** Mounting channel for NANO modules for recessed or surface mounting; for use with a beam angle of 45° onto the lower shelf; optimum illumination of shelf niches with low height; shelf height to depth ratio of 1:2

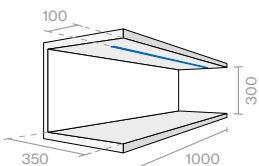
**FR** Canal de montage pour les modules de NANO pour montage encastré ou non; pour applications avec sens de diffusion à 45° sur l'étagère inférieur; éclairage optimal des niches d'étagère de hauteur moindre; rapport hauteur d'étagère / profondeur d'étagère 1:2

### Illuminance example



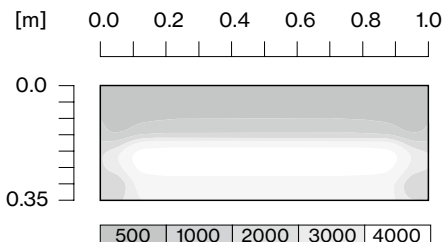
#### GENERAL

NANO turn 3×(6×1.2W)  
3000 K CRI ≥ 95 (R9 ≥ 90)  
anodised aluminium  
medium 30°

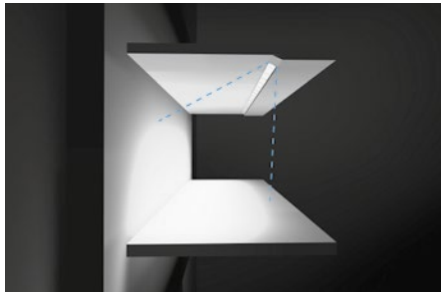


reflection factors 0.2/0.5/0.7 | maintenance factor 0.8

#### RESULT

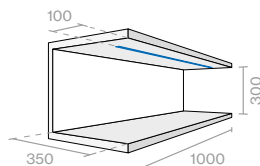


### Illuminance example



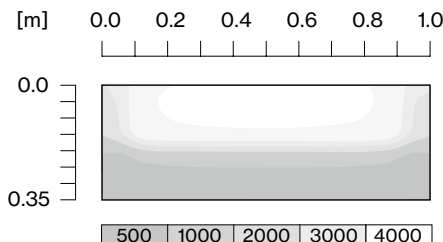
#### GENERAL

NANO turn 3×(6×1.2W)  
3000 K CRI ≥ 95 (R9 ≥ 90)  
anodised aluminium  
medium 30°

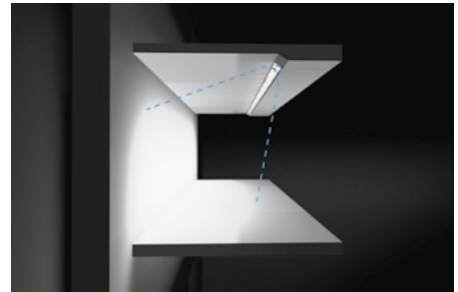


reflection factors 0.2/0.5/0.7 | maintenance factor 0.8

#### RESULT

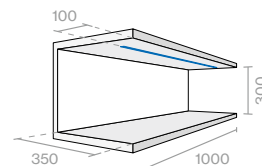


### Illuminance example



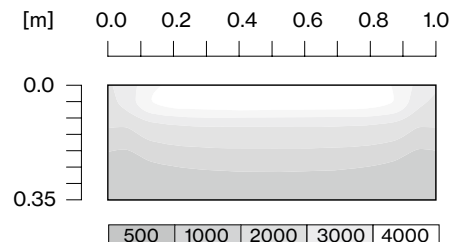
#### GENERAL

NANO turn 3×(6×1.2W)  
3000 K CRI ≥ 95 (R9 ≥ 90)  
anodised aluminium  
medium 30°



reflection factors 0.2/0.5/0.7 | maintenance factor 0.8

#### RESULT



## Order options

### TYPE

straight cut



### MATERIAL COLOUR

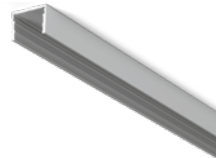
anodised aluminium  6  
anodised black  8



## Mounting channels

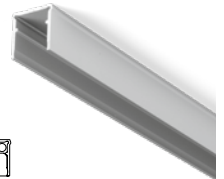
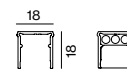
### NANO CHANNEL 90

| L (mm)                    | ORDER CODE  |
|---------------------------|---|
| 300                       | 007-190104 <input checked="" type="checkbox"/>    |
| 600                       | 007-190106 <input checked="" type="checkbox"/>    |
| 900                       | 007-190107 <input checked="" type="checkbox"/>    |
| 1200                      | 007-190108 <input checked="" type="checkbox"/>    |
| 3000                      | 007-190109 <input checked="" type="checkbox"/>    |
| custom cut (straight cut) | E 84500 ····· <input checked="" type="checkbox"/> |
| end caps (pair)           | 007-190301 <input checked="" type="checkbox"/>    |



### NANO CHANNEL 90+

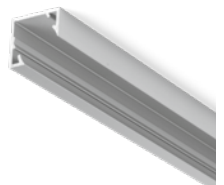
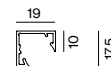
| L (mm)          | ORDER CODE  |
|-----------------|---|
| 300             | 007-190164 <input checked="" type="checkbox"/>    |
| 600             | 007-190166 <input checked="" type="checkbox"/>    |
| 900             | 007-190167 <input checked="" type="checkbox"/>    |
| 1200            | 007-190168 <input checked="" type="checkbox"/>    |
| 3000            | 007-190169 <input checked="" type="checkbox"/>    |
| custom cut      | E 84510 ····· <input checked="" type="checkbox"/> |
| end caps (pair) | 007-191361 <input checked="" type="checkbox"/>    |



space for up to 3 pieces of power cable

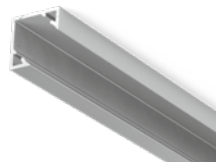
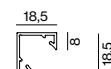
### NANO CHANNEL 60

| L (mm)          | ORDER CODE  |
|-----------------|---|
| 300             | 007-190114 <input checked="" type="checkbox"/>    |
| 600             | 007-190116 <input checked="" type="checkbox"/>    |
| 900             | 007-190117 <input checked="" type="checkbox"/>    |
| 1200            | 007-190118 <input checked="" type="checkbox"/>    |
| 3000            | 007-190119 <input checked="" type="checkbox"/>    |
| custom cut      | E 84520 ····· <input checked="" type="checkbox"/> |
| end caps (pair) | 007-190311 <input checked="" type="checkbox"/>    |



### NANO CHANNEL 45

| L (mm)          | ORDER CODE  |
|-----------------|---|
| 300             | 007-190124 <input checked="" type="checkbox"/>    |
| 600             | 007-190126 <input checked="" type="checkbox"/>    |
| 900             | 007-190127 <input checked="" type="checkbox"/>    |
| 1200            | 007-190128 <input checked="" type="checkbox"/>    |
| 3000            | 007-190129 <input checked="" type="checkbox"/>    |
| custom cut      | E 84530 ····· <input checked="" type="checkbox"/> |
| end caps (pair) | 007-190321 <input checked="" type="checkbox"/>    |



### ACCESSORIES

| TYPE                     | ORDER CODE                                     |
|--------------------------|--|
| blind cover 150 mm       | 007-190281 <input checked="" type="checkbox"/> |
| blind cover 300 mm       | 007-190284 <input checked="" type="checkbox"/> |
| blind cover 600 mm       | 007-190286 <input checked="" type="checkbox"/> |
| tape L 3000 mm / W 18 mm | 007-191919 <input checked="" type="checkbox"/> |

