



FINA spot line

recessed

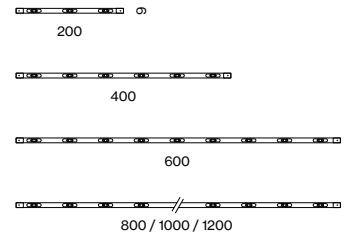
EN Miniature linear light inset made of aluminium; tubular design; optionally for recessed or surface mounting (available as an accessory); surface lacquered; plug and play electrical connector system for toolless mounting; different connectors for mechanical and electrical connection available; for flexible system design; fitted with LED light points; precise radiation characteristic with different symmetrical light distributions; or with asymmetric light distribution; light inset rotatable; energy-efficient LEDs with very good colour rendering; converter plug and play; converter separately available

DE Miniatur-Linear-Lichteinsatz aus Aluminium; tubulare Bauform; wahlweise für Einbau- oder Anbaumontage (als Zubehör erhältlich); Oberfläche lackiert; durchkontaktiertes elektrisches Stecksystem für werkzeuglose Montage; unterschiedliche Verbinder für mechanische und elektrische Verbindung verfügbar; für flexiblen Systemaufbau; bestückt mit LED Lichtpunkten; präzise Abstrahlcharakteristik mit unterschiedlichen symmetrischen Lichtverteilungen; oder mit asymmetrischer Lichtverteilung; Lichteinsatz drehbar; energieeffiziente LEDs mit sehr guter Farbwiedergabe; Konverter steckerfertig vorkonfektioniert; Konverter ist separat zu bestellen

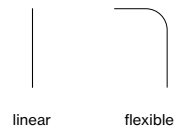
Quickinfo

3000K, 4000K
 CRI ≥ 95 (R9 ≥ 90)
 L80 @ 50000h
 up to 92lm per spot
 non DIM, DALI-2

Types



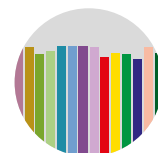
Configurations



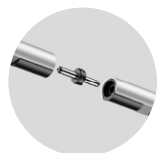
Colours



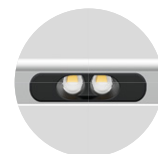
Light distributions



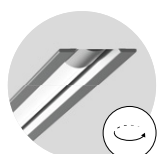
CRI ≥ 95
 R9 ≥ 90



plug & play



brilliance
 effect



fine adjustment
 possible

Order options

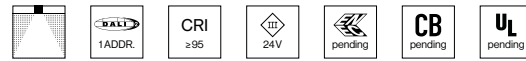
COLOUR TEMPERATURE	
3000K	0
4000K	1

MATERIAL COLOUR	
● white aluminium RAL 9006	6
● black RAL 9021	8

BEAM ANGLE	
spot 20°	S
medium 30°	M
asymmetric	A



FINA spot line



INSET ROUND

INS. POWER	COLOUR TEMP.	LUM. FLUX	L (mm)	ORDER CODE
4.3W	3000K	3×81lm	200	0 1 1 - 0 1 0 2 :: 1 ▣ ▲
	4000K	3×92lm		
8.7W	3000K	6×81lm	400	0 1 1 - 0 1 0 3 :: 1 ▣ ▲
	4000K	6×92lm		
13W	3000K	9×81lm	600	0 1 1 - 0 1 0 4 :: 1 ▣ ▲
	4000K	9×92lm		
15.3W	3000K	12×81lm	800	0 1 1 - 0 1 0 5 :: 1 ▣ ▲
	4000K	12×92lm		
19.1W	3000K	15×81lm	1000	0 1 1 - 0 1 0 6 :: 1 ▣ ▲
	4000K	15×92lm		
22.9W	3000K	18×81lm	1200	0 1 1 - 0 1 0 7 :: 1 ▣ ▲
	4000K	18×92lm		

light inset incl. 1 linear connector

Mounting channels

see last page

Electrical accessories

POWER SUPPLY 24V 220-240V AC, 50-60 Hz, □ PC II

incl. power cable 2m + connection cable with plug 1m

TYPE	L·W·H (mm)	ORDER CODE
24W non DIM	137-50-16	0 1 1 - 9 2 1 2 1 1 0
60W non DIM	170-57-18	0 1 1 - 9 2 1 2 2 1 0
45W DALI-2	237-45-31	0 1 1 - 9 2 1 2 1 3 0
80W DALI-2	340-45-30	0 1 1 - 9 2 1 2 2 3 0

Other accessories

EXTENSION CABLE

TYPE	L (mm)	ORDER CODE
1×socket / 1×plug	1500	0 1 1 - 9 2 2 1 1 2 0
1×socket / 1×plug 90°	3000	0 1 1 - 9 2 2 5 1 0 0

CONNECTORS

TYPE	L (mm)	ORDER CODE
flex connector	100	0 1 1 - 9 2 2 1 2 6 0
flex connector	35	0 1 1 - 9 2 2 5 2 0 0
linear connector		0 1 1 - 9 2 2 5 3 0 0

INSET POWER is the current consumption excluding any ballast
LUMINOUS FLUX value calculated for CRI≥95, colour black



FINA opal/lead

recessed

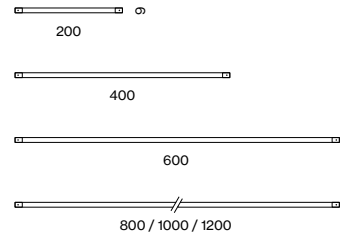
EN Miniature linear light inset made of aluminium; tubular design; optionally for recessed or surface mounting (available as an accessory); surface lacquered; plug and play electrical connector system for toolless mounting; different connectors for mechanical and electrical connection available; for flexible system design; completely homogeneously illuminated, satinised PMMA cover; or with specially computed foil for asymmetrical light distribution; light inset rotatable; energy-efficient LEDs with very good colour rendering; converter plug and play; converter separately available

DE Miniatur-Linear-Lichteinsatz aus Aluminium; tubulare Bauform; wahlweise für Einbau- oder Anbaumontage (als Zubehör erhältlich); Oberfläche lackiert; durchkontaktiertes elektrisches Stecksystem für werkzeuglose Montage; unterschiedliche Verbinder für mechanische und elektrische Verbindung verfügbar; für flexiblen Systemaufbau; absolut homogen ausgeleuchtete, satinierte PMMA-Abdeckung; oder mit speziell berechneter Folie zur asymmetrischen Lichtverteilung; Lichteinsatz drehbar; energieeffiziente LEDs mit sehr guter Farbwiedergabe; Konverter steckerfertig vorkonfektioniert; Konverter ist separat zu bestellen

Quickinfo

3000 K, 4000 K
 CRI \geq 97 (R9 \geq 90)
 L90 @ 50 000 h
 lead up to 1100 lm/m
 opal up to 962 lm/m
 non DIM, DALI-2

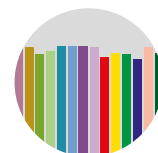
Types



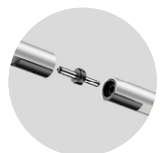
Colours



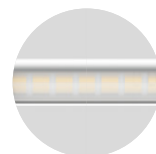
Light distributions



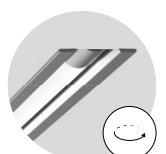
CRI \geq 97
 R9 \geq 90



plug & play



light-directing
 foil (lead optic)



fine adjustment
 possible

Order options

COLOUR TEMPERATURE	
3000K	0
4000K	1

MATERIAL COLOUR	
● white aluminium RAL 9006	6
● black RAL 9021	8

BEAM ANGLE
opal
lead asymmetric



FINA opal



INSET ROUND

INS. POWER	COLOUR TEMP.	LUM. FLUX	L (mm)	ORDER CODE
3.3W	3000K	180lm	200	0 1 1 - 1 1 0 2 :: 1 ☑ O
	4000K	192lm		
6.5W	3000K	360lm	400	0 1 1 - 1 1 0 3 :: 1 ☑ O
	4000K	385lm		
9.8W	3000K	540lm	600	0 1 1 - 1 1 0 4 :: 1 ☑ O
	4000K	577lm		
13W	3000K	719lm	800	0 1 1 - 1 1 0 5 :: 1 ☑ O
	4000K	770lm		
14.4W	3000K	899lm	1000	0 1 1 - 1 1 0 6 :: 1 ☑ O
	4000K	962lm		
17.2W	3000K	1080lm	1200	0 1 1 - 1 1 0 7 :: 1 ☑ O
	4000K	1150lm		

light inset incl. 1 linear connector



FINA lead



INSET ROUND

INS. POWER	COLOUR TEMP.	LUM. FLUX	L (mm)	ORDER CODE
3.3W	3000K	206lm	200	0 1 1 - 1 1 0 2 :: 1 ☑ A
	4000K	220lm		
6.5W	3000K	412lm	400	0 1 1 - 1 1 0 3 :: 1 ☑ A
	4000K	441lm		
9.8W	3000K	618lm	600	0 1 1 - 1 1 0 4 :: 1 ☑ A
	4000K	661lm		
13W	3000K	824lm	800	0 1 1 - 1 1 0 5 :: 1 ☑ A
	4000K	882lm		
14.4W	3000K	1030lm	1000	0 1 1 - 1 1 0 6 :: 1 ☑ A
	4000K	1100lm		
17.2W	3000K	1240lm	1200	0 1 1 - 1 1 0 7 :: 1 ☑ A
	4000K	1320lm		

light inset incl. 1 linear connector

Mounting channels

see last page

Electrical accessories

POWER SUPPLY 24V 220-240V AC, 50-60Hz, PC II

incl. power cable 2m + connection cable with plug 1m

TYPE	L-WH (mm)	ORDER CODE
24W non DIM	137-50-16	0 1 1 - 9 2 1 2 1 1 0
60W non DIM	170-57-18	0 1 1 - 9 2 1 2 2 1 0
45W DALI-2	237-45-31	0 1 1 - 9 2 1 2 1 3 0
80W DALI-2	340-45-30	0 1 1 - 9 2 1 2 2 3 0

Other accessories

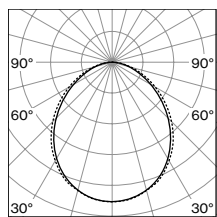
EXTENSION CABLE

TYPE	L (mm)	ORDER CODE
1× socket / 1× plug	1500	0 1 1 - 9 2 2 1 1 2 0
1× socket / 1× plug 90°	3000	0 1 1 - 9 2 2 5 1 0 0

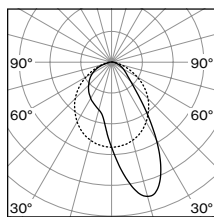
CONNECTORS

TYPE	L (mm)	ORDER CODE
flex connector	100	0 1 1 - 9 2 2 1 2 6 0
flex connector	35	0 1 1 - 9 2 2 5 2 0 0
linear connector		0 1 1 - 9 2 2 5 3 0 0

Light distributions



opal



lead asymmetric

INSET POWER is the current consumption excluding any ballast
LUMINOUS FLUX value calculated for CRI≥97, colour black



FINA stadio

recessed

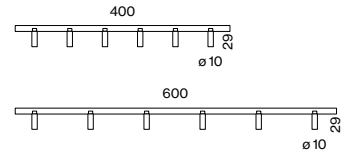
EN Miniature linear light inset made of aluminium; tubular design; optionally for recessed or surface mounting (available as an accessory); surface lacquered; plug and play electrical connector system for toolless mounting; different connectors for mechanical and electrical connection available; for flexible system design; equipped with miniature spotlight heads; spotlight heads rotatable and tiltable; high quality lens system; precise radiation characteristics with different beam angles; light inset rotatable; energy-efficient LEDs with very good colour rendering; converter plug and play; converter separately available

DE Miniatur-Linear-Lichteinsatz aus Aluminium; tubulare Bauform; wahlweise für Einbau- oder Anbaumontage (als Zubehör erhältlich); Oberfläche lackiert; durchkontaktiertes elektrisches Stecksystem für werkzeuglose Montage; unterschiedliche Verbinder für mechanische und elektrische Verbindung verfügbar; für flexiblen Systemaufbau; bestückt mit Miniatur-Strahlerköpfen; Strahlerköpfe dreh- und schwenkbar; hochwertige Linsenoptik; präzise Abstrahlcharakteristik mit verschiedenen Ausstrahlwinkeln; Lichteinsatz drehbar; energieeffiziente LEDs mit sehr guter Farbwiedergabe; Konverter steckerfertig vorkonfektioniert; Konverter ist separat zu bestellen

Quickinfo

3000 K, 4000 K
 CRI ≥ 95 (R9 ≥ 90)
 L80 @ 50000 h
 up to 60 lm per spot
 non DIM, DALI-2

Types



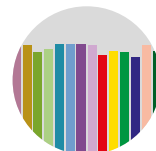
Colours



Light distributions



spot med. flood



CRI ≥ 95
 R9 ≥ 90



plug & play



360° rotatable
 90° tiltable



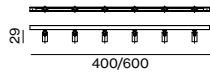
easy
 exchangeable

Order options

COLOUR TEMPERATURE	
3000K	0
4000K	1

MATERIAL COLOUR	
● white aluminium RAL 9006	6
● black RAL 9021	8

BEAM ANGLE	
spot 16°	S
medium 24°	M
flood 33°	F



FINA studio 10



INSET ROUND

INS. POWER	COLOUR TEMP.	LUM. FLUX	L (mm)	ORDER CODE
5.8 W	3000 K	317 lm	400	0 1 1 - 2 1 0 3 :: 1 ▣ ▲
	4000 K	357 lm		
5.8 W	3000 K	317 lm	600	0 1 1 - 2 1 0 4 :: 1 ▣ ▲
	4000 K	357 lm		

light inset incl. 1 linear connector

Electrical accessories

POWER SUPPLY 24V 220-240V AC, 50-60 Hz, PC II

incl. power cable 2m + connection cable with plug 1m

TYPE	L-W-H (mm)	ORDER CODE
24W non DIM	137-50-16	0 1 1 - 9 2 1 2 1 1 0
60W non DIM	170-57-18	0 1 1 - 9 2 1 2 2 1 0
45W DALI-2	237-45-31	0 1 1 - 9 2 1 2 1 3 0
80W DALI-2	340-45-30	0 1 1 - 9 2 1 2 2 3 0

Mounting channels

see last page

Electrical accessories

POWER SUPPLY 24V 220-240V AC, 50-60 Hz, PC II

incl. power cable 2m + connection cable with plug 1m

TYPE	L-W-H (mm)	ORDER CODE
24W non DIM	137-50-16	0 1 1 - 9 2 1 2 1 1 0
60W non DIM	170-57-18	0 1 1 - 9 2 1 2 2 1 0
45W DALI-2	237-45-31	0 1 1 - 9 2 1 2 1 3 0
80W DALI-2	340-45-30	0 1 1 - 9 2 1 2 2 3 0

Other accessories

EXTENSION CABLE

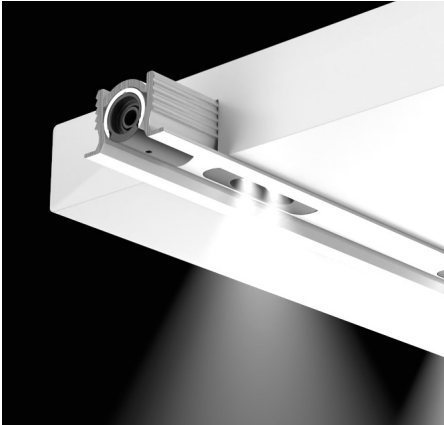
TYPE	L (mm)	ORDER CODE
1× socket / 1× plug	1500	0 1 1 - 9 2 2 1 1 2 0
1× socket / 1× plug 90°	3000	0 1 1 - 9 2 2 5 1 0 0

CONNECTORS

TYPE	L (mm)	ORDER CODE
flex connector	100	0 1 1 - 9 2 2 1 2 6 0
flex connector	35	0 1 1 - 9 2 2 5 2 0 0
linear connector		0 1 1 - 9 2 2 5 3 0 0

INSET POWER is the current consumption excluding any ballast
LUMINOUS FLUX value calculated for CRI≥95, colour black

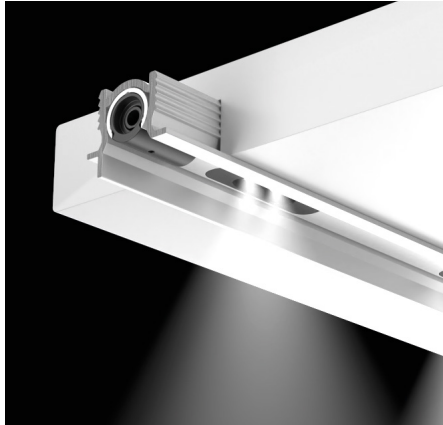
Channel overview



Channel 90 recessed

EN The mounting channel for FINA modules offers an elegant solution for installation. Ideal for applications with a 90° beam direction onto the lower shelf.

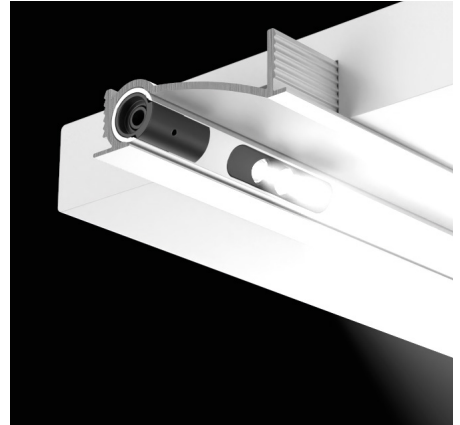
DE Der Montagekanal für FINA-Module bietet eine elegante Lösung für den Einbau. Ideal für Anwendungen mit einer Ausstrahlrichtung von 90° auf das untere Fach.



Channel 90 anti-glare

EN The mounting channel for FINA modules offers an elegant solution for installation. The anti-glare lip enables glare-free light in showcases at the viewer's eye level and is ideal for applications with a beam angle of 90° onto the lower shelf.

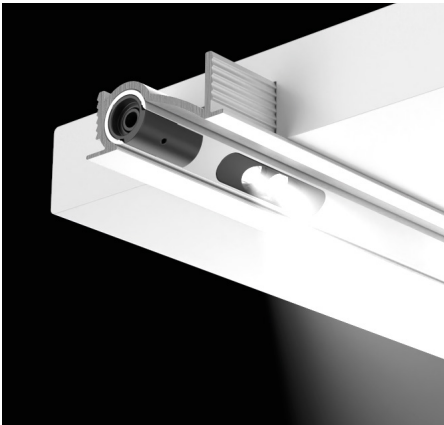
DE Der Montagekanal für FINA-Module bietet eine elegante Lösung für den Einbau. Die Anti Glare Blendlippe ermöglicht blendfreies Licht in Vitrinen in Augenhöhe des Betrachters und ist ideal für Anwendungen mit einer Ausstrahlrichtung von 90° auf das untere Fach.



Channel 60 recessed

EN The mounting channel for FINA modules offers an elegant solution for installation. Ideal for applications with a beam angle of 60° to the bottom of the compartment and for compartment niches with the same compartment height and depth.

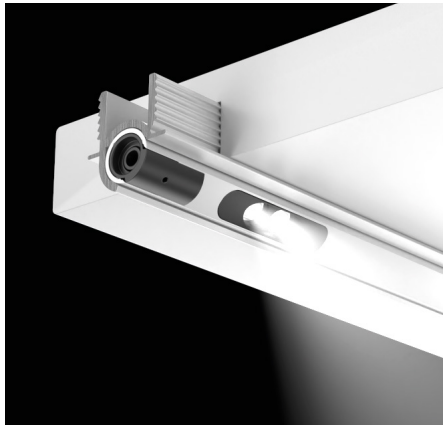
DE Der Montagekanal für FINA-Module bietet eine elegante Lösung für den Einbau. Ideal für Anwendungen mit einer Ausstrahlrichtung von 60° auf das untere Fach sowie von Fachnischen mit gleicher Fachhöhe und -tiefe.



Channel 45 recessed

EN The mounting channel for FINA modules offers an elegant solution for installation. Ideal for applications with a beam angle of 45° to the bottom of the compartment as well as for compartment niches with a low height. The ratio of compartment height to depth is 1:2.

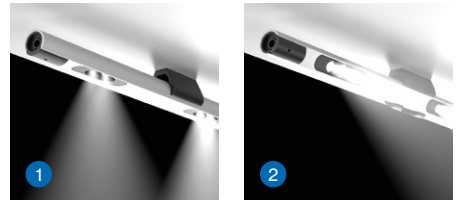
DE Der Montagekanal für FINA-Module bietet eine elegante Lösung für den Einbau. Ideal für Anwendungen mit einer Ausstrahlrichtung von 45° auf das Fach untere sowie von Fachnischen mit geringer Höhe. Das Verhältnis der Fachhöhe zur -tiefe ist 1:2.



Channel 45 jut-out

EN The jut-out mounting channel ensures ideal illumination of the lower compartment without shadowing. Ideal for applications with a beam direction of 45° onto the lower shelf as well as shelf niches with a low height.

DE Der jut-out Montagekanal sorgt für eine ideale Ausleuchtung des unteren Faches ohne Abschattungen. Ideal für Anwendungen mit einer Ausstrahlrichtung von 45° auf das untere Fach sowie von Fachnischen mit geringer Höhe.



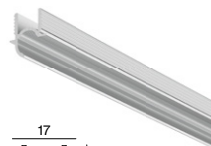
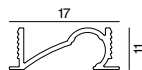
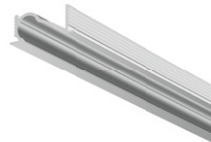
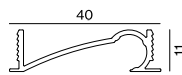
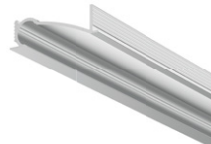
Mounting clip 90/60/45 surface

EN Mounting clips for NANO modules for surface mounting. ① Beam direction of 90° onto the bottom shelf. ② Beam direction of 60° onto the bottom shelf and for niches with the same shelf height and depth. ③ Emission direction of 45° onto the bottom shelf and for niches with a low height. The ratio of compartment height to depth is 1:2.

DE Montageclips für NANO-Module zur Anbaumontage. ① Ausstrahlrichtung von 90° auf das untere Fach. ② Ausstrahlrichtung von 60° auf das untere Fach und für Fachnischen mit gleicher Fachhöhe und -tiefe. ③ Ausstrahlrichtung von 45° auf das untere Fach und für Fachnischen mit geringer Höhe. Das Verhältnis der Fachhöhe zur -tiefe ist 1:2.

Order options

MATERIAL COLOUR		<input checked="" type="checkbox"/>
● white aluminium RAL 9006	6	
● black RAL 9021	8	



Mounting channels

CHANNEL 90

L (mm)	ORDER CODE
230	011-910020 <input checked="" type="checkbox"/>
430	011-910030 <input checked="" type="checkbox"/>
630	011-910040 <input checked="" type="checkbox"/>
830	011-910050 <input checked="" type="checkbox"/>
1030	011-910060 <input checked="" type="checkbox"/>
1230	011-910070 <input checked="" type="checkbox"/>
custom cut	E84800 ···· <input checked="" type="checkbox"/>

CHANNEL 90 ANTI-GLARE

L (mm)	ORDER CODE
230	011-910120 <input checked="" type="checkbox"/>
430	011-910130 <input checked="" type="checkbox"/>
630	011-910140 <input checked="" type="checkbox"/>
830	011-910150 <input checked="" type="checkbox"/>
1030	011-910160 <input checked="" type="checkbox"/>
1230	011-910170 <input checked="" type="checkbox"/>
custom cut	E84810 ···· <input checked="" type="checkbox"/>

CHANNEL 60

L (mm)	ORDER CODE
230	011-910220 <input checked="" type="checkbox"/>
430	011-910230 <input checked="" type="checkbox"/>
630	011-910240 <input checked="" type="checkbox"/>
830	011-910250 <input checked="" type="checkbox"/>
1030	011-910260 <input checked="" type="checkbox"/>
1230	011-910270 <input checked="" type="checkbox"/>
custom cut	E84820 ···· <input checked="" type="checkbox"/>

CHANNEL 45

L (mm)	ORDER CODE
230	011-910320 <input checked="" type="checkbox"/>
430	011-910330 <input checked="" type="checkbox"/>
630	011-910340 <input checked="" type="checkbox"/>
830	011-910350 <input checked="" type="checkbox"/>
1030	011-910360 <input checked="" type="checkbox"/>
1230	011-910370 <input checked="" type="checkbox"/>
custom cut	E84830 ···· <input checked="" type="checkbox"/>

CHANNEL 45 JUT-OUT

L (mm)	ORDER CODE
230	011-910420 <input checked="" type="checkbox"/>
430	011-910430 <input checked="" type="checkbox"/>
630	011-910440 <input checked="" type="checkbox"/>
830	011-910450 <input checked="" type="checkbox"/>
1030	011-910460 <input checked="" type="checkbox"/>
1230	011-910470 <input checked="" type="checkbox"/>
custom cut	E84840 ···· <input checked="" type="checkbox"/>

Accessories

MOUNTING CLIP

TYPE	ORDER CODE
clip 90 surface	011-910000 <input checked="" type="checkbox"/>
clip 60 surface	011-910200 <input checked="" type="checkbox"/>
clip 45 surface	011-910300 <input checked="" type="checkbox"/>