

MITA circle 160

ceiling

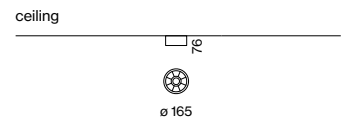
EN Cylindrical ceiling surface mounted luminaire made of aluminium; slim design; ring shaped arranged reflectors; surface powder coated; mounting plate with pre-assembled converter unit can be pre-mounted; luminaire housing can be attached without tools by interlock; incl. blind cover made of plastic in the cut-out; optional: SASSO 60 round sensor installed in the cut-out; sensor with DALI-2 control: brightness and presence sensor; high gloss reflector with faceted design; energy-efficient LEDs with very good colour rendering

DE Zylindrische Deckenanbauleuchte aus Aluminium; schlanke Bauform; ringförmig angeordnete Reflektoren; Oberfläche pulverbeschichtet; Montageplatte mit vormontierter Konvertereinheit vorab montierbar; Leuchtenkörper mittels Verriegelung werkzeuglos aufsetzbar; inkl. Blindabdeckung aus Kunststoff im Innenausschnitt; optional: SASSO 60 round sensor im Innenausschnitt verbaut; Sensor mit DALI-2 Steuerung: Helligkeits- und Anwesenheitssensor; hochglänzender Reflektor mit Facettenoptik; energieeffiziente LEDs mit sehr guter Farbwiedergabe

Quickinfo

3000 K, 4000 K, TW
 CRI \geq 80, 3 SDCM
 UGR \leq 19 / $65^\circ \leq 1500$ cd/m²
 up to 140 lm/W
 L90 @ 50 000 h
 DALI-2, DALI-2 sensor
 reflector (UGR \leq 19)

Type



Colours



luminaire

reflector

Light distributions



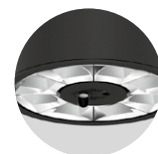
direct



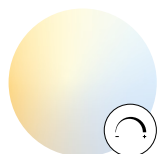
dark chrome
reflector option



DIN EN 12464-1
UGR \leq 19



sensor version
available



tunable white
2700–6500 K

Order options

COLOUR TEMPERATURE ◆◆

3000K	5
4000K	6
tunable white 2700–6500K*	D

*DALI-2 DT8

CONTROL ◆

DALI-2	3
DALI-2 ESSENTIAL sensor (brightness & presence)*	7

*DALI-2 application controller needed

MATERIAL COLOUR ◆

○ pure white RAL 9010	7
● jet black RAL 9005	8

REFLECTOR COLOUR ■

✓ chrome	R
● dark chrome	B



□ IRE



∅ 165

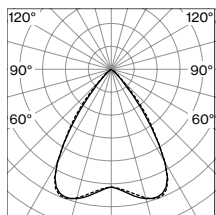
MITA circle 160 ceiling



REFLECTOR DIRECT

SYSTEM POWER	COLOUR TEMP.	LUMINOUS FLUX	ORDER CODE
8.5W	3000K	1050lm	0 7 4 - 7 6 1 6 ◆◆ ◆■
	4000K	1190lm	
8.7W	2700 – 6500 K	890lm	0 7 4 - 7 6 1 6 D ◆ ◆■

Light distribution



reflector (UGR ≤19)
direct

LUMINOUS FLUX value calculated for
CRI ≥ 80, colour white, reflector chrome